
FIELD BOOK

740

B. K. ELLIOTT COMPANY

PLEASE RETURN TO
GEAUGA COUNTY ENGINEER

TABLE FOR REDUCING PERCHES TO FEET AND INCHES.

| PERCH. | FEET. | PERCH. | FEET. | PERCH. | FEET. | PERCH. | FEET. | PERCH. | FEET. | PERCH. | FEET. |
|--------|----------|--------|------------|--------|------------|--------|-------------|--------|-------------|--------|---------|
| 1 | 16 6 in. | 21 | 3 46 6 in. | 41 | 6 76 6 in. | 61 | 10 06 6 in. | 81 | 13 36 6 in. | 100 | 16 50 0 |
| 2 | 33 0 | 22 | 3 63 0 | 42 | 6 93 0 | 62 | 10 23 0 | 82 | 13 53 9 | | |
| 3 | 49 6 | 23 | 3 79 6 | 43 | 7 09 6 | 63 | 10 39 6 | 83 | 13 60 6 | | |
| 4 | 66 0 | 24 | 3 96 0 | 44 | 7 26 0 | 64 | 10 56 0 | 84 | 13 69 9 | | |
| 5 | 82 6 | 25 | 4 12 6 | 45 | 7 42 6 | 65 | 10 72 6 | 85 | 13 76 6 | | |
| 6 | 99 0 | 26 | 4 29 0 | 46 | 7 59 0 | 66 | 10 89 0 | 86 | 13 84 0 | | |
| 7 | 1 15 6 | 27 | 4 45 6 | 47 | 7 75 6 | 67 | 11 05 6 | 87 | 13 91 6 | | |
| 8 | 1 32 0 | 28 | 4 62 0 | 48 | 7 92 0 | 68 | 11 22 0 | 88 | 14 00 0 | | |
| 9 | 1 48 6 | 29 | 4 78 6 | 49 | 8 08 6 | 69 | 11 38 6 | 89 | 14 09 9 | | |
| 10 | 1 65 0 | 30 | 4 95 0 | 50 | 8 25 0 | 70 | 11 55 0 | 90 | 14 18 6 | | |
| 11 | 1 81 6 | 31 | 5 11 6 | 51 | 8 41 6 | 71 | 11 71 6 | 91 | 14 27 9 | | |
| 12 | 1 98 0 | 32 | 5 28 0 | 52 | 8 58 0 | 72 | 11 88 0 | 92 | 14 36 6 | | |
| 13 | 2 14 6 | 33 | 5 44 6 | 53 | 8 74 6 | 73 | 12 04 6 | 93 | 14 45 9 | | |
| 14 | 2 31 0 | 34 | 5 61 0 | 54 | 8 91 0 | 74 | 12 21 0 | 94 | 14 54 6 | | |
| 15 | 2 47 6 | 35 | 5 77 6 | 55 | 9 07 6 | 75 | 12 37 6 | 95 | 15 03 9 | | |
| 16 | 2 64 0 | 36 | 5 94 0 | 56 | 9 24 0 | 76 | 12 54 0 | 96 | 15 12 6 | | |
| 17 | 2 80 6 | 37 | 6 10 6 | 57 | 9 40 6 | 77 | 12 70 6 | 97 | 15 21 9 | | |
| 18 | 2 97 0 | 38 | 6 27 0 | 58 | 9 57 0 | 78 | 12 87 0 | 98 | 15 30 6 | | |
| 19 | 3 13 6 | 39 | 6 43 6 | 59 | 9 73 6 | 79 | 13 03 6 | 99 | 15 39 9 | | |
| 20 | 3 30 0 | 40 | 6 60 0 | 60 | 9 90 0 | 80 | 13 20 0 | 100 | 15 48 6 | | |

COURT HOUSE
CHARDON OHIO
PHONE 250-X

B. K. ELLIOTT COMPANY, PITTSBURG, PA.
DRAWING MATERIALS AND SURVEYING INSTRUMENTS

GH #19
Swine Creek Road - 1-41 ✓
Middlefield & Parkman Twp.
Middlefield Parkman Road C.H. #16
Boone Sch. House - Midd. Co. pg 43

Pages 43-
Hopkins-Boone culvert 305+72 — Pg 63

Profile of Swine Creek Rd from
old state to Madison Rd
Pg 65 & 66

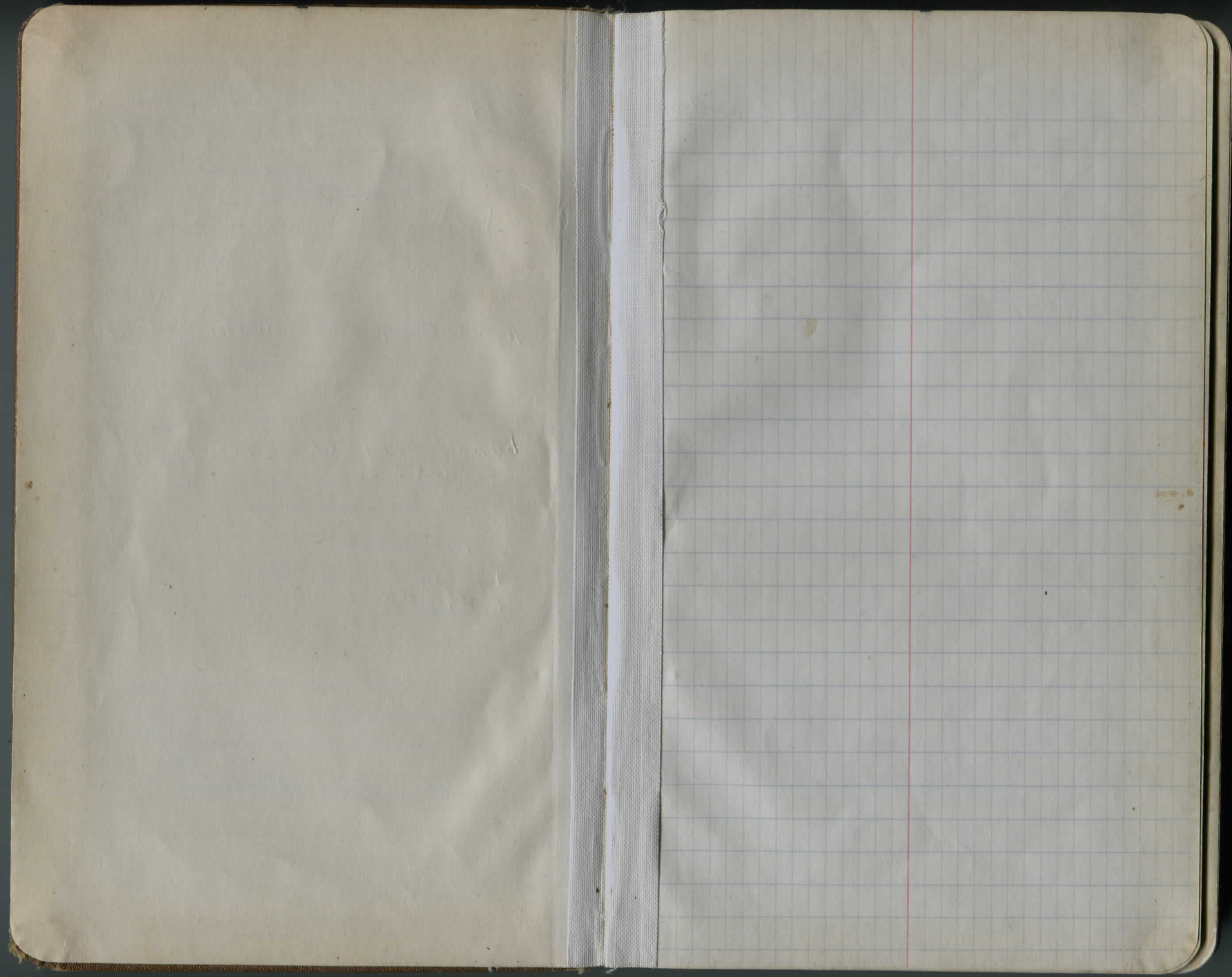
Bundysburg Rd Cemetary Pg 70
Parkman Twp.

SWINE CREEK
topo for retaining wall
@ B&O R.R. XLING

Pgs 69 & 71
9 SEP 81

Please return to the
County Engineers Office
Chardon Ohio

(150)



T.H. #19

Swine Creek Road & Location
side stakes set 25' Lt. of 4

5

4

10-20' 25 of 3-1-58

Sta 3+68.45 PI PA R11021 pin
Fd

3

2

1

Sta 0+00 Beginning of Imp
pin
Fd

1/13/35

Riehey
Graber
Strong

1

spk N side 28" Maple

Fd 11-19-42

I Pin Fd. 1/24/58

59.16

3923

spike
24" Maple
E side

178-40" 3-1-58

3082

spike in Top
15" Cherry Stump

spk S side
C&T = 180101

4757



SE. spike
10" Elm
5' bare ground

8712

Old State Road

B.M.
spike
14" Maple

39050'

7432

1/2" IP Fd Feb. 1, 58

15642'

Parkman Rd.

Middlefield

119045

SEE Ref
pg 43

17

16

15

14

13

12

11

10

9

8

7

6

5

30' - 12" CIR & CMP ← 12+00±

41

40

39

38

37

Sta 36 + 78¹⁰

POT

Sewer
Jet

36

35

$$\Delta = 18^{\circ}04'$$

$$D = 10'$$

$$T = 91.09$$

$$E = 7.2$$

$$L = 180.07$$

$$PC = 30 + 31.04$$

$$PT = 32 + 11.11$$

$$31 = 1.2$$

$$31 + 50 = 4.5$$

$$32 = 1$$

34

33

32

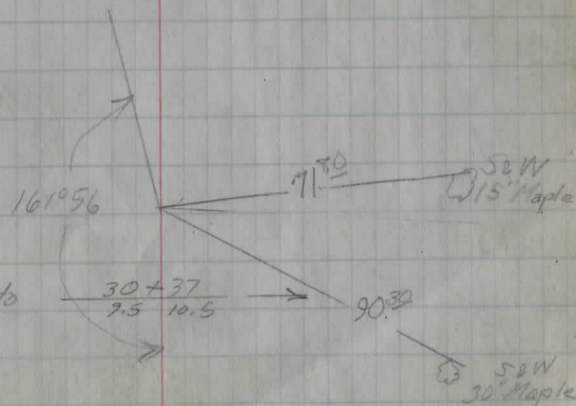
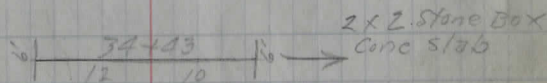
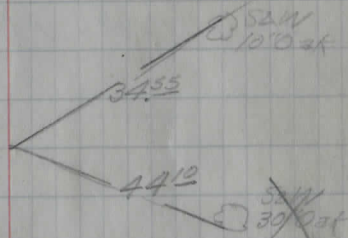
Sta 31 + 22¹³PI Def Lt 15⁰⁰Pipes
Set

31

30

29

4

12" CMP into
8" tileSewer
30' Maple

65

64

63

62

61

60

Sta 59+48^{3/4} POT

59

58

57

56

Sta 55+60^{0.4} PI Def Lt 16° 48' Pin Set

55

$\Delta = 16^{\circ} 48'$

$D = 50$

$T = 162.22$

$E = 12.4$

$L = 336.00$

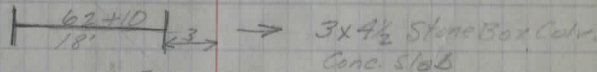
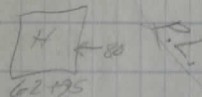
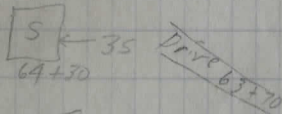
$PC = 53+90.82$

$PT = 57+26.82$

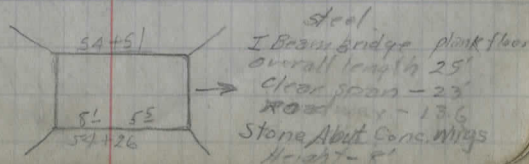
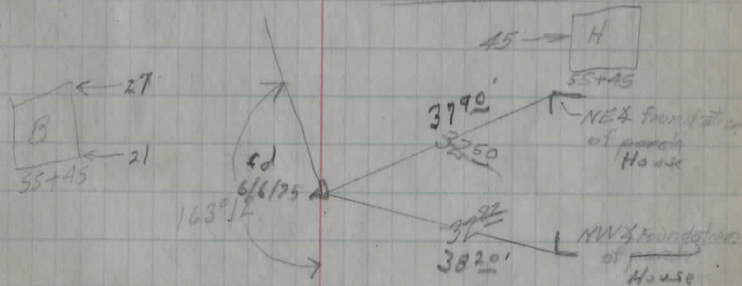
54

53

12" CIP 12' long Flow RT 65+10 →



55+50 Drive



77

$\Delta = 28^{\circ}40'$

$D = 16^{\circ}$

$T = 91.50$

$E = 11.5$

$L = 179.17$

$PC = 73+45.20$

$PT = 75+26.07$

74 - 3.9
74+10 - 7.8
75 - .9

76

75

Sta 74+37.40 PI Def Rt $28^{\circ}40'$ pipe set

74

73

72

Sta 71+50.12 PI Def Rt $6^{\circ}39'$ pipe set

71

$\Delta = 6^{\circ}39'$

$D = 4^{\circ}$

$T = 83.22$

$E = 2.4$

$L = 166.25$

$PC = 70+66.97$

$PT = 72+33.22$

71 - 3
72 - 3

70

69

$\Delta = 22^{\circ}52'$

$D = 7^{\circ}$

$T = 165.55$

$E = 16.7$

$L = 326.67$

$PC = 64+00.57$

$PT = 67+27.24$

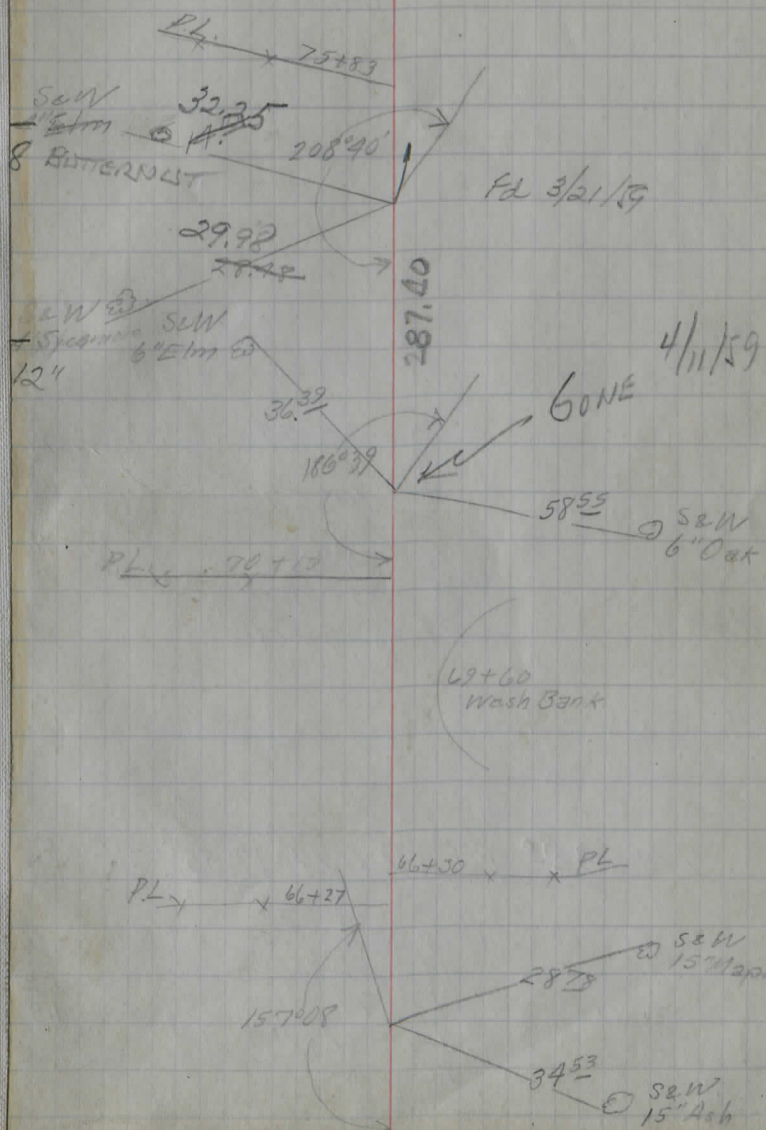
65 - 6.0
66 - 9.8
67 - .6

67

66

Sta 65+66.12 PI Def Lt $22^{\circ}52'$ pipe set

65



89

88

87

86

85

Sta 84+22 \approx PI Det RT $33^{\circ}44'$ PIP
Set

$$\Delta = 33^{\circ}44'$$

$$D = 12^{\circ}$$

$$T = 144.77$$

$$E = 21.5$$

$$L = 281.11$$

$$PC = 82+77.51$$

$$PT = 85+58.62$$

82

81

80

Sta 79+53 \approx PI Det LT $17^{\circ}55'$ PIP
Set

79

$$\Delta = 17^{\circ}55'$$

$$D = 10^{\circ}$$

$$T = 90.82$$

$$E = 7.1$$

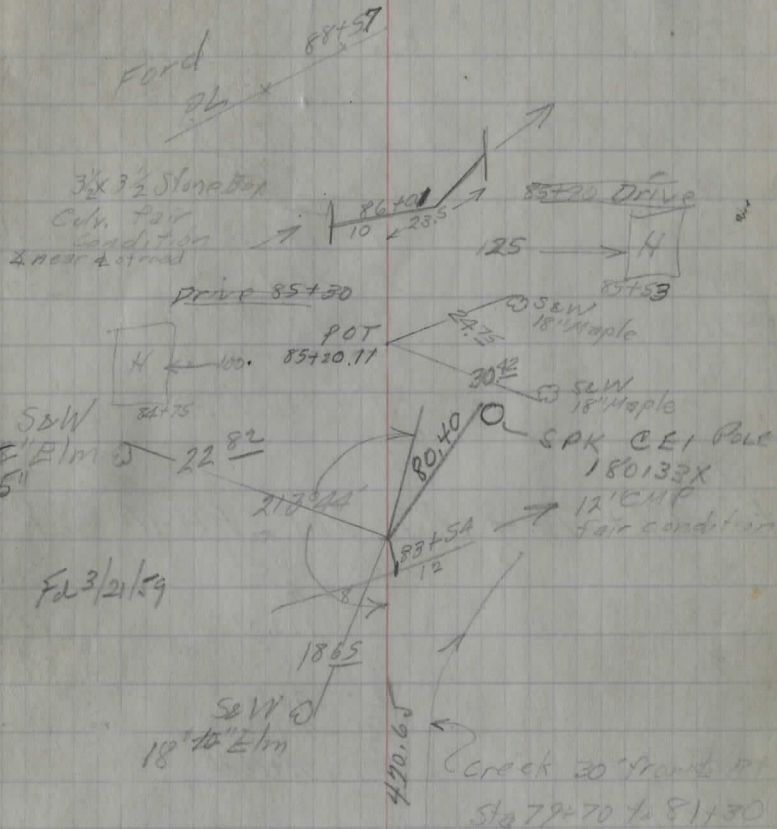
$$L = 179.17$$

$$PC = 78+62.78$$

$$PT = 80+41.25$$

78

77

70-1.2
80-1.5

Fd 3/21/59

SPK N. SIDE
14" OAKSPK S. SIDE
10" OAK
2W
6" Elm
GONESPK N. SIDE
CEI 180/130XI.P. Fd
4/11/59

518.53 c

114

113

Set new PT. 18° NW of old PI

112

Sta 111 + 31.40 PI Det R + 33°00' P.P.C.

111

$\Delta = 33^{\circ}00'$ cur. 23

$D = 20'$

110

$T = 84.86$ 111 -

$E = 12.3$ 111 + 31 -

$L = 165.00$ 112 -

109

$PC = 110 + 46.54$

$PT = 112 + 11.54$

short 4.72

108

107

See page 38

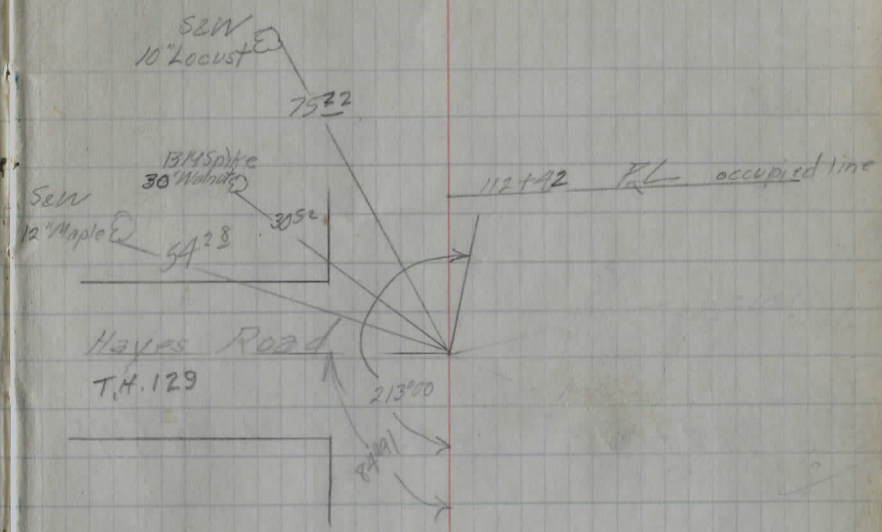
106

105

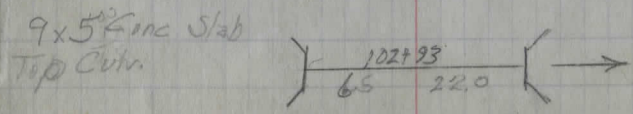
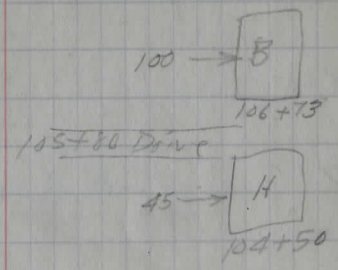
104

103

102



12' CIP
Good Condition
 $\frac{107+67}{15.3} \rightarrow$



126

125

124

123

Sta 122 + 78.39 PI Def R + 0°28' Pipe

122

over 64

121

120

119

118

117

Make & at 117

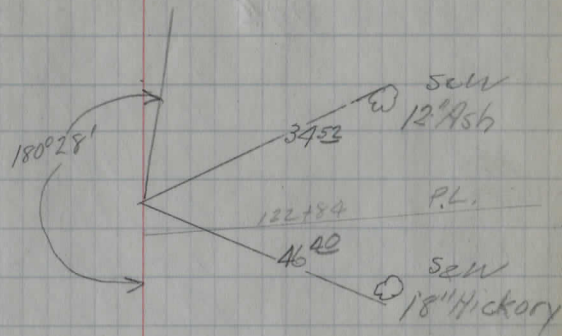
116

115

114

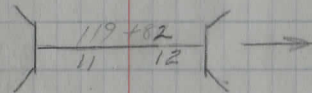
24" CIP
Good condition

$$\frac{125 + 31}{12.5 \quad 75} \rightarrow$$



See page 38

4x4 Stone Box
Conc. Slab & wings



12' CIP
18' long

$$\frac{116 - 54}{1 \quad 17} \rightarrow$$

138

137

Sta 136 + 87.02 PI Def Lt 2353 Pipe Set

136

$\Delta - 25^{\circ}53'$

D - 10°

135

T - 121'±

E - 127

134

L - 238.53

PC - 135 + 65.89

133

PT - 138 + 04.72

132

131

130

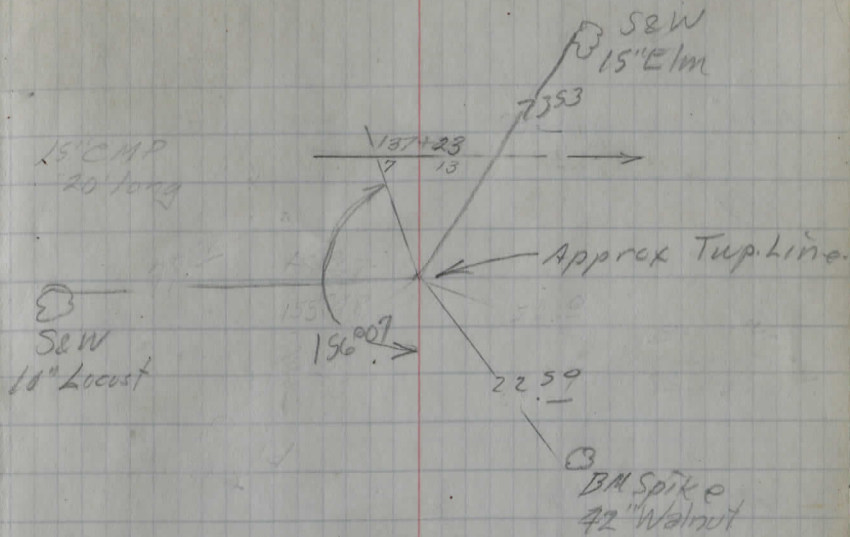
129

128

127

126

See page 38



150

149

148

147

146

145

See page 38

144

Sta 143 + 26.56

PI Def Rt 27°20'

PIPE SET

143

~~D - 27°20'~~

~~D - 140~~

~~T - 97.5~~

~~E - 11.5~~

~~L - 15.23~~

~~PC - 142 + 27.09~~

~~PT - 147 + 22.26~~

43-52
143+50.44
144-2

142

141

140

139

138

10" CMP 16' long
Flow Mt.

~~146+60 Drive~~

~~146+43 P.Lk~~

145+68 →

Drive 145+20

S&W
24' Ash D

26.27 20930

10x2 Conc Slab
Top Cur Stone
Walk

143+19
16'

S&W 44.5
16" W chg
ad

12" CMP
Good condition

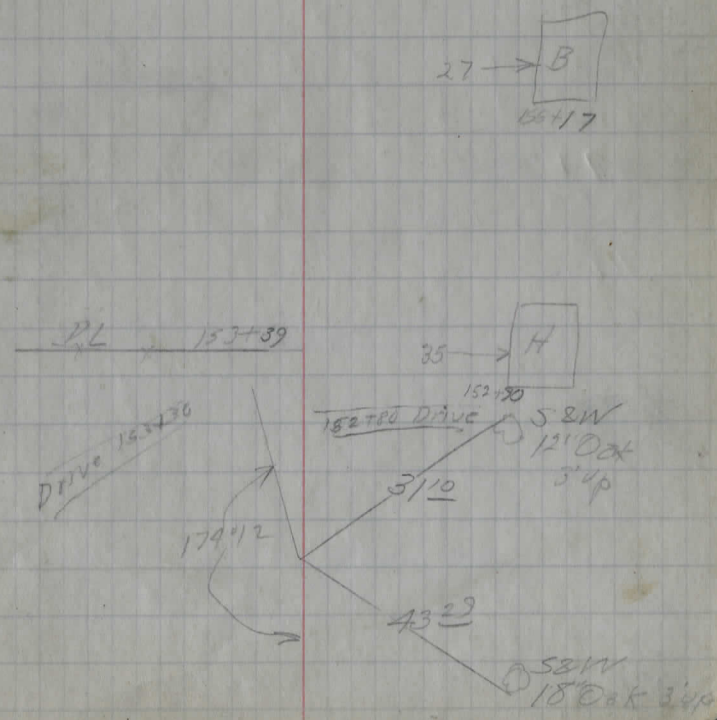
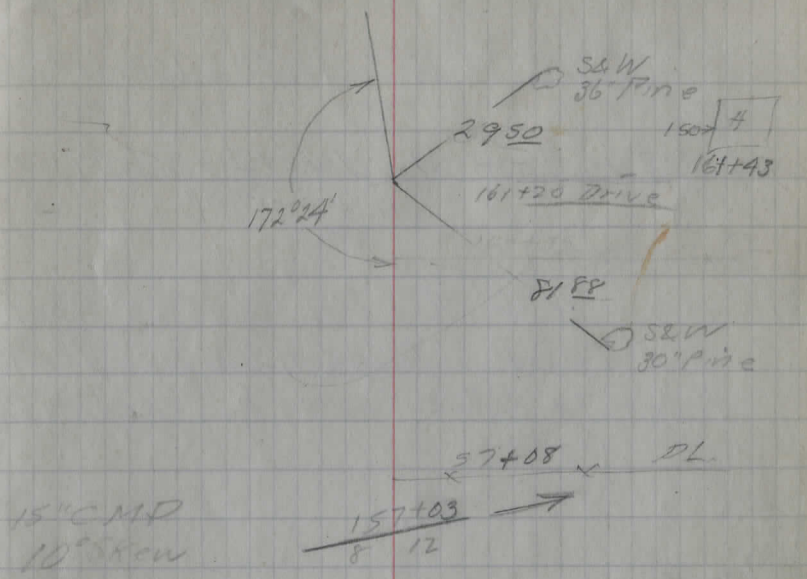
141+07
16 4 →

139+90 Drive

162
 Sta 161+56.78 Def Lt 7°36' P. in
 161 Δ = 7°36' Set
 D = 30
 T = 126.87
 E = 4.3 161 = 1.3
 L = 253.33 162 = 1.8
 PC = 160+29.91
 PT = 162+83.24

See page 38

154 Δ = 5°48'
 D = 4°
 T = 72.57
 E = 1.8 151 = .2
 L = 145.00 152 = .6
 PC = 150+74.35
 PT = 152+19.35
 Sta 151+46.22 PI Def Lt 5°48' P. 100
 151 1.25 ft.



Short Station $167+86^{91} = 167+87^{86} = 0^{95}$

Note Sta $167+62^{91} = \text{Sta } 167+35^{20}$
of Parkman Bundysburg Road

Sta $167+86^{91}$ PI Def RT $15^{\circ}22'$ Spike Set
Pin found on tangent produced NWly
from $167+86^{91} = \text{old PI on Bundysburg Imp}$
25.85' back.

167

Sta $166+28^{31}$ Sideroad, R.L. pin fd about 5 to R.L.

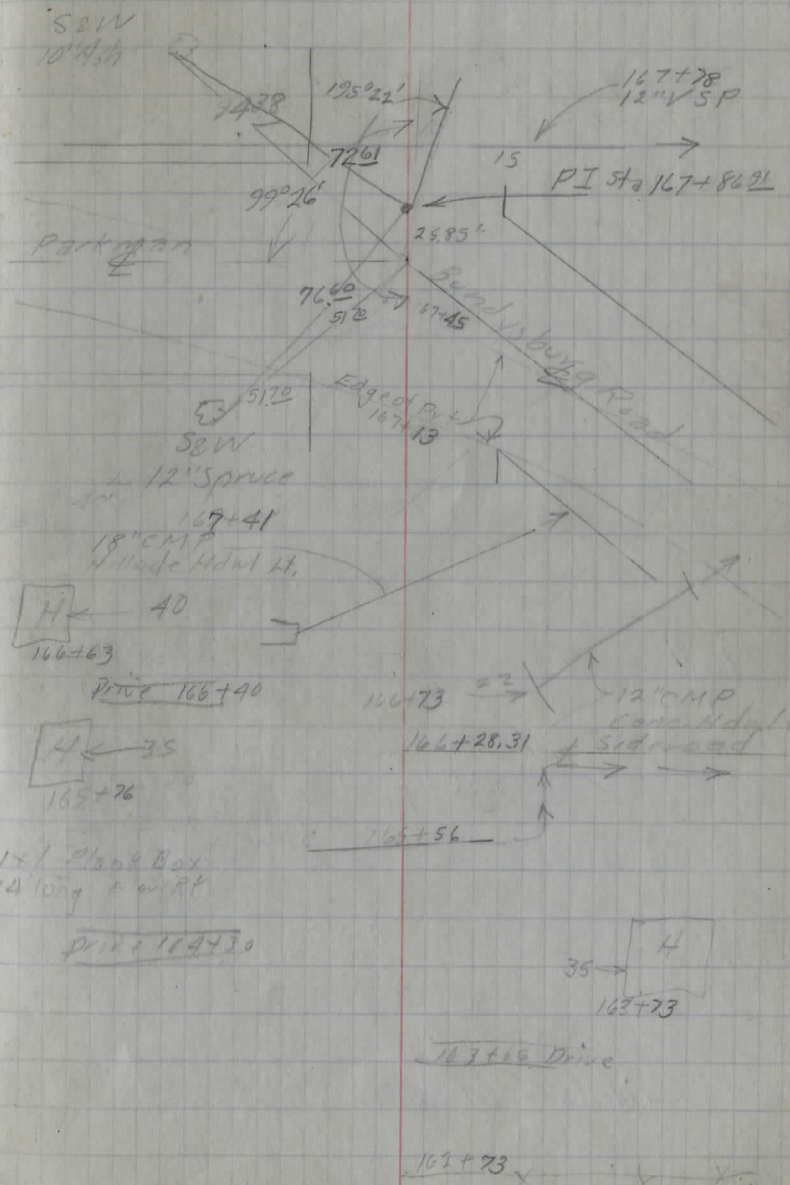
166

165

164

163

162



528 $\sqrt{173+18}$
 1384
 1531
 1056
 4958

3.27 miles

Middlefield - 2.59 miles

Sta 173 + 7/26 End

Spk fd
 Set pins

173

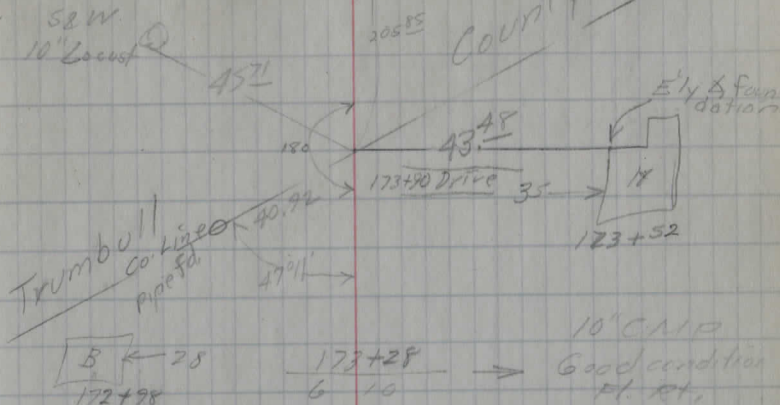
172

171

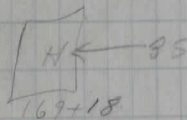
170

169

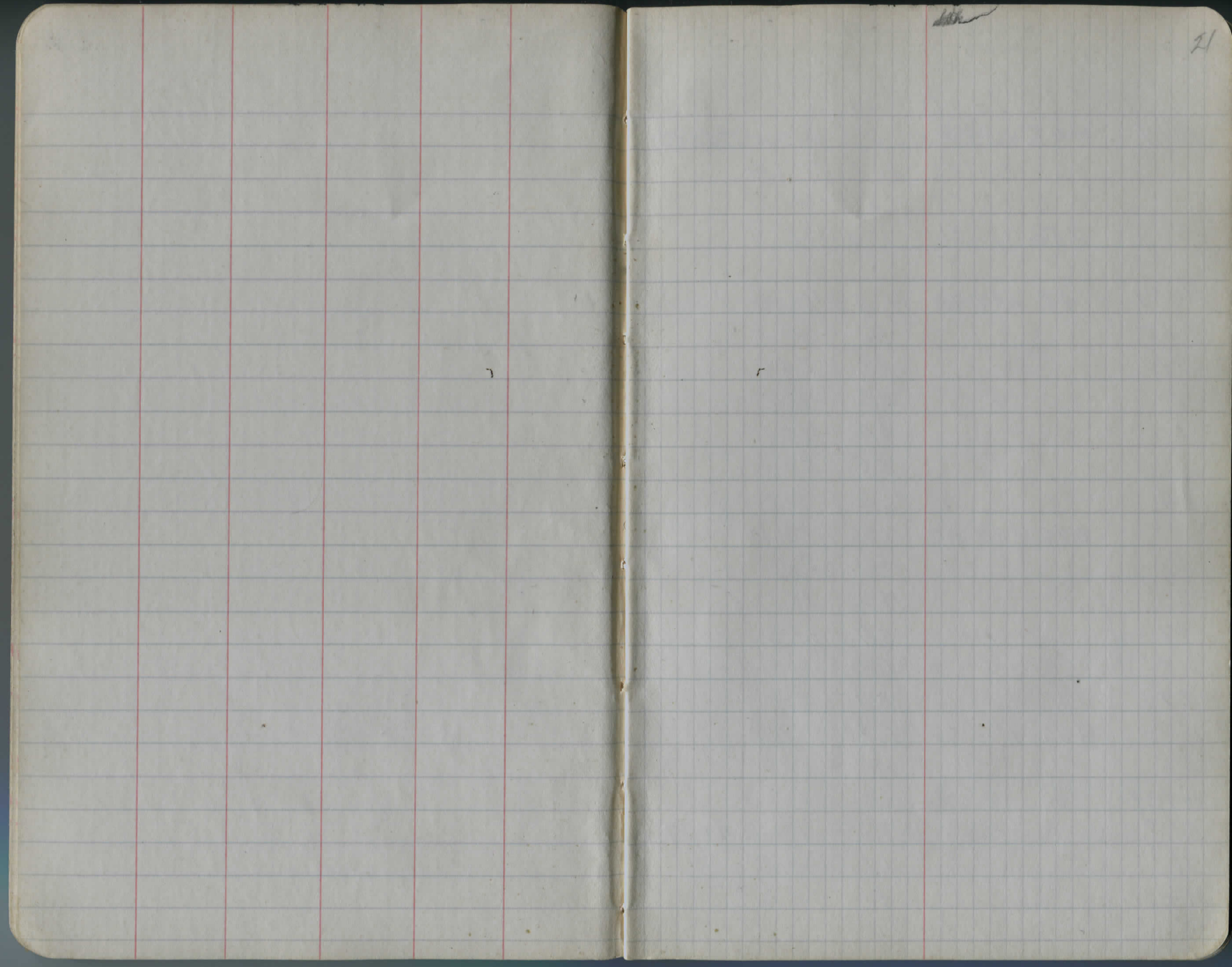
168 sidestake set 15' RT.



June 170+10



8" advert req'd at 168+70



21

1/20/36

Richey
Strong

22

Profile Levels Swine Creek Road

| | | | | | |
|-------|-----|---------|------|---------|---------|
| BM | 547 | 1153.76 | | | 1148.29 |
| | 066 | 1151.80 | 262 | 1151.14 | |
| | 016 | 1140.35 | 1161 | 1140.19 | |
| | 286 | 1135.51 | 770 | 1132.65 | |
| BM#1 | 148 | 1127.80 | 919 | 1126.32 | 1126.42 |
| 18+86 | | | 1.6 | 26.2 | |
| 20 | | | 3.2 | 24.6 | |
| 21 | | | 4.0 | 23.8 | |
| 22 | | | 4.4 | 23.4 | |
| 23 | | | 5.3 | 22.5 | |
| 24 | | | 6.6 | 21.2 | |
| | 096 | 1121.00 | 776 | 1120.04 | |
| 25 | | | 1.5 | 19.5 | |
| 26 | | | 5.9 | 15.1 | |
| 27 | | | 8.7 | 12.3 | |
| 28 | | | 10.0 | 11.0 | |
| 29 | | | 10.7 | 10.3 | |
| | 436 | 1114.46 | 1090 | 1110.10 | |
| 30 | | | 4.9 | 09.6 | |
| 30+37 | | | | | |
| BM#2 | | | 7.73 | | 1106.73 |
| 31 | | | 5.1 | 09.4 | |
| 31+90 | | | 4.5 | 10.0 | |

Spike E root 48' Elm 25' 21' E 145' NW 0+00

Spike NW root 15' E 1m 100' RT E Sta 19+00

| Fl. | IP | IP | El | Profile | Good fall |
|-----|----|----|----|---------|-----------|
| 74 | 64 | 70 | 81 | 84 | |

Spike NW root 36' Maple 90' RT E Sta 31+00

85 HI FS Elev
111446

33 13.1 11014

0.61 1102.37 12.70 1101.76

34 5.9 1096.5

34+43

35 6.7 95.7

36 5.5 96.9

37 9.4 93.0

1.18 1092.45 11.10 1091.27

38 10.9 81.6

0.44 1080.57 12.32 1080.13

39 7.5 73.1

40 12.4 68.2

1.54 1069.68 12.43 1068.14

BM #3 42.6 1065.42

41 8.6 61.1

Bridge Tracks 1093.5

Bottom of Girder 1080.8

0.77 1057.94 12.51 1057.17

42 2.2 55.7

43 6.7 51.2

44 7.5 48.4

45 11.1 46.8

1.85 1049.64 10.15 1047.79

45+05

| | | | | | | |
|------|-----|----|----|-----|-----|-----|
| FI | TO | TH | TH | TO | FI | FS |
| 10.3 | 8.7 | 60 | 61 | 8.7 | 104 | 125 |

Tracks 935
Bottom of Girder 80.8

Spike N root 24" Oak 40' RT ± Sta 39+95

| | | | | | | |
|----|----|----|-----|----|----|-----|
| FI | TO | TH | TH | TO | FI | FS |
| 70 | 40 | 16 | 1.8 | 42 | 73 | 100 |
| | | | | | | 99 |

1049.64

| | | | | |
|-------------|-------|--------|------|---------|
| 46 | | | 5.4 | 44.2 |
| 47 | | | 6.8 | 42.8 |
| 48 | | | 7.5 | 42.1 |
| 4.9 | | | 7.2 | 42.4 |
| | 3.22 | 104561 | 7.25 | 1042.39 |
| 49+70 | | | 2.0 | 43.6 |
| 50 | | | 3.4 | 42.2 |
| 51 | | | 4.7 | 40.9 |
| 52 | | | 5.5 | 40.1 |
| 53 | | | 9.0 | 36.6 |
| 54 | | | 10.9 | 34.7 |
| 81#4 | 8.57 | 104520 | 8.98 | 1036.63 |
| 84+26 Floor | | | 8.6 | 36.6 |
| Flow | | | 17.0 | 28.2 |
| 54+51 Floor | | | 8.5 | 36.7 |
| Flow | | | 15.0 | 30.2 |
| 55 | | | 7.6 | 37.6 |
| 56 | | | 4.2 | 41.0 |
| | 10.99 | 105600 | 0.19 | 1045.01 |
| 57 | | | 10.3 | 45.7 |
| 58 | | | 2.6 | 53.4 |
| | 8.56 | 106316 | 1.40 | 1054.60 |
| 59 | | | 2.8 | 60.4 |
| 59+30 | | | 1.4 | 61.8 |

93
97

Cross cut SEX W about 10R/E Sta 54+27

Ed 57

floor Ward

floor E end.

| | | | |
|-------|---------|-------|---------|
| | 106316 | | |
| 60 | | 65 | 56.7 |
| 101 | 1051.47 | 1270 | 1050.46 |
| 61 | | 24 | 49.1 |
| 62 | | 59 | 45.6 |
| 62+10 | | | |
| 63 | | 96 | 41.9 |
| 64 | | 124 | 39.1 |
| 5.20 | 104403 | 12.64 | 103883 |
| BM#5 | | 7.75 | 1036.28 |
| 65 | | 6.0 | 38.0 |
| 66 | | 5.6 | 38.4 |
| 67 | | 5.0 | 39.0 |
| 68 | | 6.9 | 37.1 |
| 69 | | 10.7 | 33.3 |
| 1.55 | 103440 | 11.18 | 1032.85 |
| 70 | | 3.7 | 30.7 |
| 71 | | 5.6 | 28.8 |
| 71+25 | | 7.0 | 27.4 |
| 0.73 | 102245 | 12.68 | 1021.72 |
| 72 | | 2.7 | 19.8 |
| 73 | | 8.6 | 13.9 |
| 74 | | 10.1 | 12.4 |
| 75 | | 11.9 | 10.6 |
| 0.20 | 1010.28 | 12.37 | 1010.08 |

| | | | | | | | |
|------|-----|------|-----|-----|------|------|------|
| 39.9 | | | | | | | |
| FI | TO | T.H. | TH | TO | FI | Σ | 40 |
| 11.6 | 7.4 | 4.8 | 5.1 | 7.7 | 12.7 | 13.1 | 20.5 |

Spike N. root 15" Berch 35' RT & Sta 64+70

101028

| | | | |
|-------|------|---------|--------------|
| 76 | | 1.4 | 1008.9 |
| BM#6 | | 2.70 | 1007.58 |
| 77 | | 5.7 | 046 |
| 78 | | 8.3 | 020 |
| 79 | | 10.2 | 1000.1 |
| 80 | | 11.8 | 998.5 |
| | 2.90 | 1001.24 | 11.94 998.34 |
| 81 | | 3.5 | 997.7 |
| 82 | | 4.1 | 997.1 |
| 83 | | 4.4 | 96.8 |
| 83+54 | | | |
| 84 | | 4.5 | 96.7 |
| 85 | | 1.8 | 994 |
| 86 | | 1.8 | 99.4 |
| | 0.32 | 1001.25 | 0.31 1000.93 |
| 84+03 | | | |
| 87 | | 3.8 | 997.5 |
| 88 | | 5.0 | 96.3 |
| BM#7 | | 3.40 | 997.85 |
| 89 | | 5.9 | 95.4 |
| 90 | | 7.3 | 94.0 |
| 91 | | 11.1 | 90.2 |
| | 3.13 | 993.06 | 11.32 989.93 |
| 92 | | 4.3 | 988.8 |

Spike NE root 18" Oak 25' RT# Sta 76+60

| | | | | |
|----|----|----|----|----|
| Fl | TP | TP | Fl | 50 |
| 63 | 74 | 57 | 65 | 80 |

| | | | | | | |
|----|----|----|----|----|----|----|
| Fl | TP | H | H | TP | Fl | 50 |
| 66 | 50 | 03 | 50 | 46 | 78 | 89 |

Spike NW root twin 16' Maples 20' LT# Sta 87+35

99306

| | | | |
|--------|------|-------|--------------|
| 93 | | 4.8 | 988.3 |
| 94 | | 2.7 | 990.4 |
| 95 | | 1.2 | 991.9 |
| 96 | | 0.9 | 992.2 |
| | 1.69 | 99387 | 088 992.18 |
| 97 | | 1.0 | 992.9 |
| 97+35 | | 0.0 | 993.9 |
| 98 | | 4.3 | 89.6 |
| 99 | | 65. | 87.4 |
| 100 | | 9.4 | 84.5 |
| 101 | | 12.3 | 81.6 |
| | 390 | 98585 | 11.92 981.95 |
| 102 | | 4.7 | 981.2 |
| 102+95 | | - | - |
| 103 | | 4.1 | 81.8 |
| BM#8 | | 2.72 | 983.13 |
| 104 | | 4.3 | 81.6 |
| 105 | | 6.4 | 79.5 |
| 106 | | 6.9 | 79.0 |
| | 7.37 | 98631 | 6.91 978.94 |
| 107 | | 7.3 | 979.0 |
| 107+69 | | | |
| 108 | | 6.3 | 80.0 |
| 109 | | 4.2 | 82.1 |

$\frac{FI}{111}$ $\frac{TO}{53}$ $\frac{TH}{2.6}$ $\frac{TH}{2.7}$ $\frac{TO}{53}$ $\frac{H}{10.8}$ Good fall

X cut SE of S Headwall 21' H_d Sta 103+00

$\frac{H}{92}$ $\frac{TP}{80}$ $\frac{TP}{88}$ $\frac{FI}{9.6}$ $\frac{40}{99}$

986.31

| | | | | |
|--------|-------|--------|-------|--------|
| 100 | 10.29 | 996.26 | 0.34 | 985.97 |
| 110 | | | 9.5 | 986.8 |
| 111 | | | 4.2 | 992.1 |
| B/M #9 | | | 0.89 | 995.37 |
| | 0.30 | 995.67 | | |
| 111+33 | | | 3.0 | 92.7 |
| 112 | | | 5.8 | 89.9 |
| 113 | | | 9.4 | 86.3 |
| | 0.06 | 984.31 | 11.42 | 984.25 |
| 114 | | | 3.8 | 80.5 |
| 115 | | | 6.7 | 77.6 |
| 116 | | | 8.3 | 76.0 |
| 116+61 | | | | |
| | 2.39 | 978.50 | 8.20 | 976.11 |
| 117 | | | 3.4 | 75.1 |
| 118 | | | 2.4 | 76.1 |
| 119 | | | 4.8 | 73.7 |
| 119+89 | | | | |
| 120 | | | 4.8 | 73.7 |
| 121 | | | 3.1 | 75.4 |
| | 9.27 | 986.84 | 0.93 | 977.57 |
| 122 | | | 5.9 | 80.9 |
| 122+60 | | | 1.8 | 85.0 |
| 123 | | | 1.5 | 85.3 |

Spike Wood 30 Walnut 30 Lt + Sta 111+50

$$- \frac{FI}{11.4} \quad \frac{FI}{12.4} \quad \frac{7.5}{13.2}$$

$$\frac{FI}{9.4} \quad \frac{7.0}{6.0} \quad \frac{H}{4.0} \quad \frac{H}{4.0} \quad \frac{7.0}{6.0} \quad \frac{FI}{9.7} \quad \frac{5.0}{10.9}$$

| | | | |
|--------|--------|-------|--------|
| | 986.84 | | |
| BM#10 | | 12.6 | 985.58 |
| 124 | | 1.8 | 85.0 |
| 124+60 | | 1.8 | 85.0 |
| 125 | | 3.7 | 83.1 |
| 0.92 | 979.90 | 7.86 | 978.78 |
| 125+38 | | 1.1 | 78.8 |
| 126 | | 2.2 | 77.7 |
| 127 | | 9.1 | 70.8 |
| 128 | | 12.4 | 67.5 |
| 2.09 | 970.62 | 11.37 | 968.53 |
| 129 | | 3.7 | 66.9 |
| 130 | | 5.6 | 65.0 |
| 131 | | 11.7 | 58.9 |
| 0.90 | 959.55 | 11.97 | 958.65 |
| 132 | | 8.7 | 50.9 |
| 133 | | 12.4 | 47.2 |
| 2.25 | 949.41 | 12.39 | 947.16 |
| 134 | | 3.9 | 45.5 |
| 135 | | 5.3 | 44.1 |
| 136 | | 5.8 | 43.6 |
| BM#11 | | 4.52 | 944.89 |
| 3.52 | 948.41 | | |
| 137 | | 4.9 | 43.5 |
| 137+30 | | | |

Spike Sroot 36" W. Cherry 24' Lt Sta 123+40

| | |
|------------------|-----------------------------------------------------|
| 76.5 | 66.4 |
| $\frac{F1}{3.4}$ | $\frac{F1}{41}$ $\frac{35}{13.5}$ $\frac{50}{16.0}$ |

Spike NW root 36" Walnut 35' Rt Sta 136+90

| | |
|------------------|--------------------------------------------|
| $\frac{F1}{6.1}$ | $\frac{F1}{6.5}$ $\frac{50}{6.9}$ Goodfall |
|------------------|--------------------------------------------|

| | B.S. | H.I. | F.S. | Elev |
|--------|-------|--------|------|--------|
| | | 94841 | | |
| 138 | | | 5.1 | 43.3 |
| 139 | | | 4.5 | 43.9 |
| | 150 | 951.64 | 1.27 | 247.14 |
| 140 | | | 4.3 | 47.3 |
| 141 | | | 5.5 | 46.1 |
| 141+14 | | | | |
| 142 | | | 4.9 | 46.7 |
| 143 | | | 2.9 | 48.7 |
| 143+26 | | | 0.8 | 50.8 |
| 144 | | | 2.8 | 48.8 |
| | 4.82 | 953.91 | 2.55 | 949.02 |
| BM#12 | | | 3.05 | 250.86 |
| 145 | | | 5.6 | 48.3 |
| 145+7 | | | | |
| 146 | | | 5.5 | 48.4 |
| 147 | | | 4.1 | 49.8 |
| 148 | | | -0.4 | 54.3 |
| | 10.20 | 963.81 | 0.30 | 953.61 |
| 149 | | | 2.7 | 61.1 |
| TP | | | 2.37 | 261.44 |
| | 11.93 | 973.37 | | 961.16 |
| BM#13 | | | 9.80 | 963.57 |

| | | |
|-----|-----|-----|
| FI | FI | 50 |
| 6.6 | 6.6 | 7.6 |

| | | | | | | |
|-----|-----|------|------|-----|-----|-----|
| FI | TO | H | H | TO | FI | 50 |
| 4.3 | 1.5 | -0.1 | -0.1 | 1.7 | 4.1 | 6.0 |

Spike SE Root 18" W Cherry 27 1/2' S/O 144+75

| | | | |
|----------|-----|-----|-----|
| Pond 304 | FI | FI | 50 |
| 6.4 | 6.7 | 6.9 | 8.1 |

-28 Sandyburg Rd Imp.

BM#16 8.16 936.39 928.23

167+13 7.0 29.4

167+45 6.2 30.2

168 6.1 30.3

168+80 6.2 30.2

169 6.1 30.3

170 3.8 32.6

171 5.6 30.8

172 7.6 28.8

9.78 937.81 8.36 928.03

173 9.8 28.0

173+35

174 10.0 27.8

175 7.6 30.2

176 0.5 37.3

Level for 200'

BM#17 8.98 928.83

5.21 934.04

54 16 5.82 928.22

X cut SW & W parapet 75' Rt & Sta 168+25

$\frac{E \text{ V. } \frac{1}{2} \text{ h}}{7.3}$

| | | | | |
|-------------------|-------------------|-------------------|-------------------|-------------------|
| $\frac{FI}{12.1}$ | $\frac{TP}{11.3}$ | $\frac{TP}{11.9}$ | $\frac{FI}{12.5}$ | $\frac{ZE}{14.0}$ |
|-------------------|-------------------|-------------------|-------------------|-------------------|

R.P. Spike NW side 10' Locust 30' Lt & Sta 174

| | | | | | |
|----------------|-------|--------|------|--------|-----------|
| BM 16 | 667 | 934.90 | | 928.23 | check, 2) |
| BM 15 | | | 6.68 | | 928.22 |
| 167 | | | 5.4 | 29.5 | |
| Flow 166+80 | | | 92 | 25.7 | |
| 166 | | | 5.1 | 29.8 | |
| 165+63 | | | | | |
| 165 | | | 3.5 | 31.4 | |
| 164 | | | 2.3 | 32.6 | |
| | 10.55 | 944.50 | 0.95 | 933.25 | |
| 163 | | | 9.3 | 35.2 | |
| 162 | | | 6.5 | 38.0 | |
| 161 | | | 3.2 | 41.3 | |
| | 8.61 | 952.51 | 0.60 | 943.90 | |
| BM 14 | | | 4.79 | | 947.72 |
| 160 | | | 6.4 | 46.1 | |
| 159 | | | 4.0 | 48.5 | |
| 158 | | | 2.5 | 50.0 | |
| 157+10 | | | 1.0 | 51.5 | |
| 157 | | | 0.9 | 51.6 | |
| | 8.24 | 960.57 | 0.18 | 952.33 | |
| 156 | | | 7.1 | 53.5 | |
| 155 | | | 5.6 | 55.0 | |
| 154 | | | 3.6 | 57.0 | |
| 153 | | | 0.4 | 60.2 | |

Xcut SWA w parapet
Elev 927.25 = BM # 21 Gandyburg Rd Imp. 60' RT @ Sta 168+70

W'y & Headwall culv. 22' RT @ Sta 166+80

Culv. 22' RT Sta 166+80

$\frac{FI}{5.6}$ $\frac{FI}{5.2}$

Spike NW roof 30" Pine 25' RT @ Sta 160+50

$\frac{FI}{2.3}$ $\frac{FI}{2.4}$

| | | | | |
|--------|------|--------|-------|--------|
| | | 960.57 | | |
| | 1143 | 971.88 | 0.12 | 960.45 |
| 152 | | | 6.2 | 65.7 |
| BM 13 | | | 8.35 | 963.53 |
| 151+45 | | | 1.0 | 70.9 |
| 151 | | | 0.5 | 71.4 |
| 150 | | | 3.8 | 68.1 |
| 149+60 | | | 4.8 | 67.1 |
| | | | 10.44 | 961.44 |

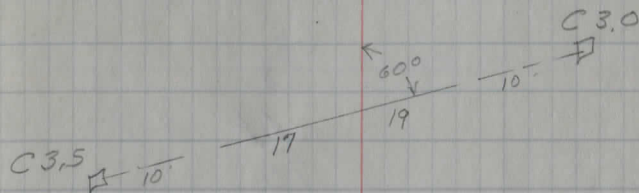
Spike NW root ^{white} 15" Oak 30' RT & Sta 151+90

Rock at Sta 149

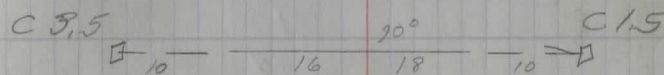
6/15/36

35

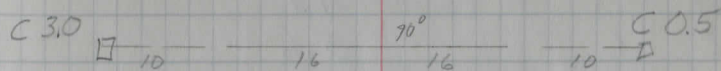
| No. 21 Sta 157+03 | Flow | Stake | Cut |
|-------------------|------|-------|-------|
| ± | 5.1 | | |
| Flow Lt | 6.80 | | |
| Stake Lt | 6.66 | 3.16 | C 3.5 |
| Flow Rt | 7.30 | | |
| Stake Rt | 7.44 | 4.44 | C 3.0 |



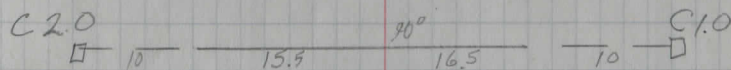
| No 22 Sta 166+01 | Flow | Stake | Cut |
|------------------|------|-------|-------|
| ± | 5.4 | | |
| Flow Lt | 7.0 | | |
| Stake Lt | 6.86 | 3.36 | C 3.5 |
| Flow Rt | 7.5 | | |
| Stake Rt | 7.64 | 6.14 | C 1.5 |



| No 23 Sta 168+70 | Flow | Stake | Cut |
|------------------|------|-------|-------|
| ± | 5.3 | | |
| Flow Lt | 6.8 | | |
| Stake Lt | 6.67 | 3.67 | C 3.0 |
| Flow Rt | 7.2 | | |
| Stake Rt | 7.33 | 6.83 | C 0.5 |



| No 24 Sta 173+28 | Flow | Stake | Cut |
|------------------|------|-------|-------|
| ± Road | 5.4 | | |
| Flow Lt | 7.5 | | |
| Stake Lt | 7.37 | 5.37 | C 2.0 |
| Flow Rt | 8.5 | | |
| Stake Rt | 8.63 | 7.63 | C 1.0 |



No 16 Sta 125+31

4 2.5

Flow L 4.6

Stake L.

Flow R 15.7

Log R 11.7

31
□ 10 — 17 — 35 — 10 □

Construction @ Sta 96 to 152

Sta 111+12.20 Def Lt. 35°15'

pipe
set

$$\Delta = 35^{\circ}15'$$

$$D = 20^{\circ}$$

$$T = 91.01$$

$$E = 14.1$$

$$L = 176.25$$

$$PC = 110+21.69$$

$$PT = 111+97.94$$

Sta 101+99 ± Def Lt 30°58'

pipe
set

$$\Delta = 30^{\circ}58'$$

$$D = 12^{\circ}$$

$$T = 132.27$$

$$E = 18.0$$

$$L = 258.06$$

$$PC = 100+66.23$$

$$PT = 103+24.29$$

Sta 97+76.20 Def Lt 14°00'

old PI

$$\Delta = 14^{\circ}00'$$

$$D = 14^{\circ}$$

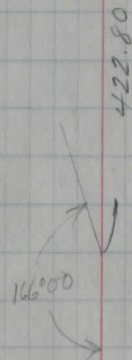
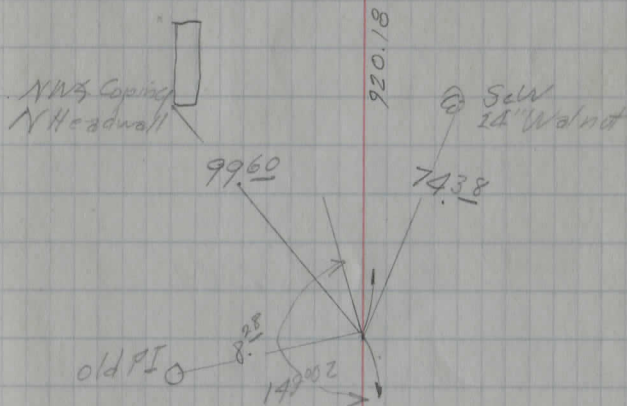
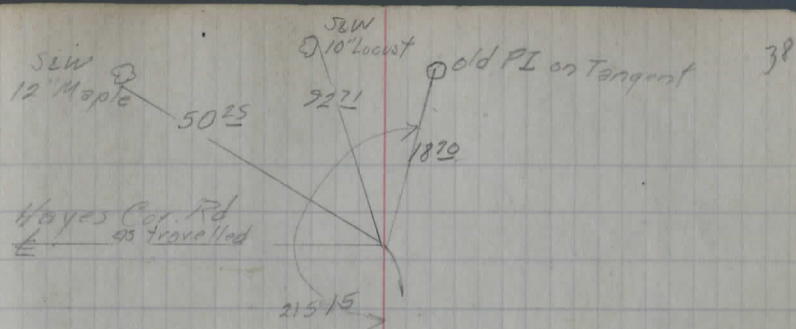
$$T = 50.25$$

$$E = 4.0$$

$$L = 100.00$$

$$PC = 97+26.45$$

$$PT = 98+26.45$$



Sta 136+87⁰² ± Def Lt 26°12' Pipe Set

Δ - 26°12'

D - 70

T - 190⁴²

E - 21.9

L - 374.29

PC -

PT -

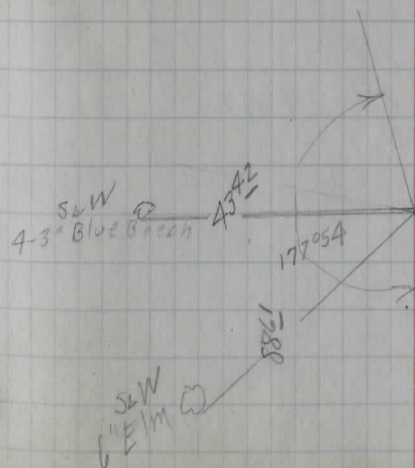
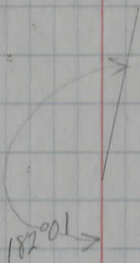
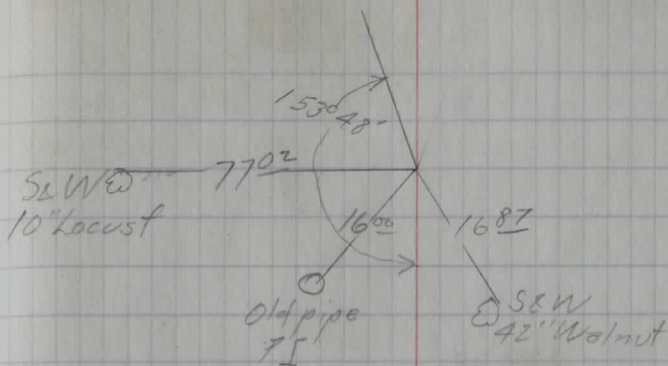
4/21/9
6.5

Sta 122+78³⁹ Def Rt 2°01' Old PI

Old PI

Sta 117+00 ± Def Lt 2°06' Pipe Set

Pipe Set



Sta 143+26⁵⁶ Def Rt 29°49'

Δ - 29'49"

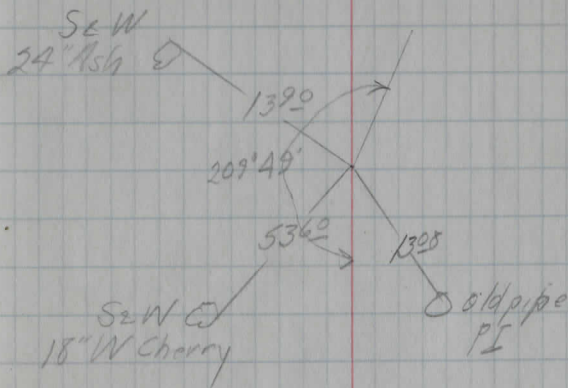
D - 30

T - 50.73

E - 6.6

L - 99.39

Pipe
Set



Drainage South from Sta 18+86

| | | | | |
|-------------|------|---------|------|---------|
| BM #1 | 4.87 | 1131.19 | | 1126.32 |
| ± Road | | | 5.1 | |
| Flow Culv. | | | 6.3 | 1124.9 |
| 100' ± Road | | | 5.7 | |
| 100' Ditch | | | 6.6 | |
| 200' ± | | | 4.5 | |
| 200' Ditch | | | 5.8 | |
| | 3.95 | 1130.79 | 4.35 | 1126.84 |
| 300' ± | | | 5.1 | |
| 300' Ditch | | | 6.0 | 24.8 |
| 350' Ditch | | | 7.8 | |

± int at 160'

CH#6

Middlefield - Parkman
Sec. B.

7/24/39 Clear - 20°

Pomelo - Richards - Clause

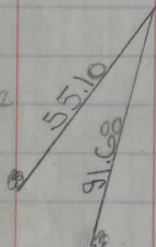
7/25/39 Part of P.M.

7/26/39

7/27/39

N 38-47 W

245+32⁷⁵



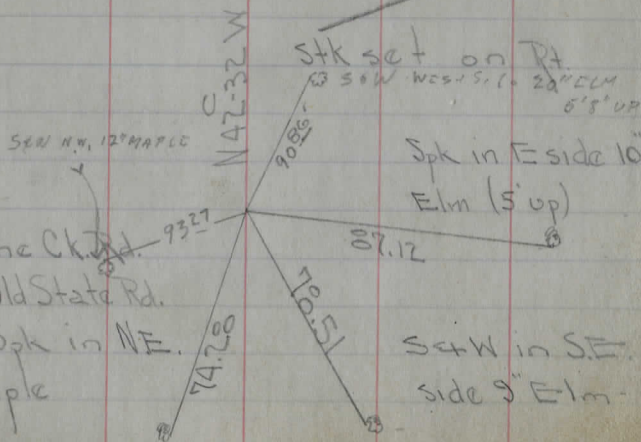
Set W in NE side
16" Maple

Set W in SW side
11" Maple

Note: R/W = 66'

Stakes set at 30' lt. unless otherwise noted.

245 to



242+08⁷⁰

= Oto Swine Ck. Rd.
= 245+32⁷⁵ Old State Rd.

Bent over Spk in NE side
14" Maple

Set W in SE side
9" Elm

OLD STATE RD.

43

(NOW SR 608)
± 1964?

A: 3-45 Rt

D: 1-30

P.C: 244+71.7

P.T: 247+21.7

L: 250.0

E: 2.05

T: 125.10

28.3 to 245

245 to 0-12-45

246 to 0-57-45

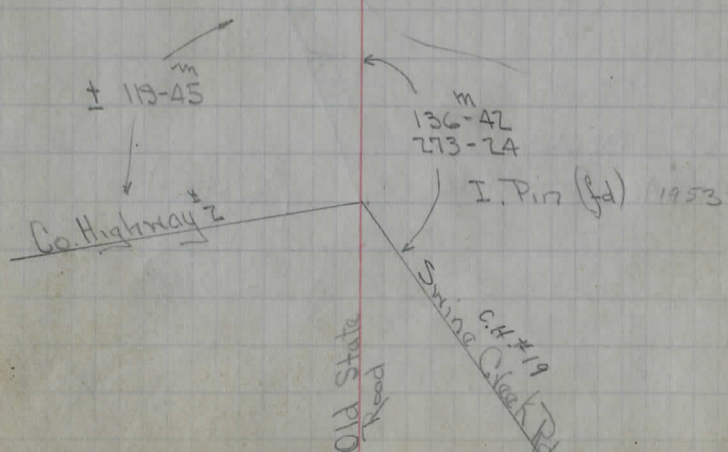
Roofing Nail (fd)

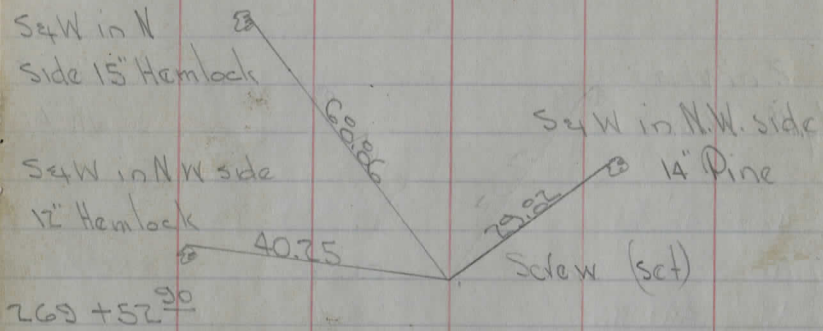
247 to 1-42-45

+21.7 1-52-30

± 119-45

136-42
273-24





N 79-30 W

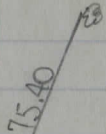
S&W in SW side 18" Hick.

S&W in SE side

C.E.I. # 192683

254+01.40

37.20



Spike (set)

P.O.T.

Deflections

| | |
|---------------|------------|
| PC: 253+09.67 | 40.33 |
| T +50 | 1°-00'-30" |
| 254+01.40 | 2-15-30 |
| +50 | 3-30-30 |
| P.T. +92.67 | 4-34-30 |

Old Curve

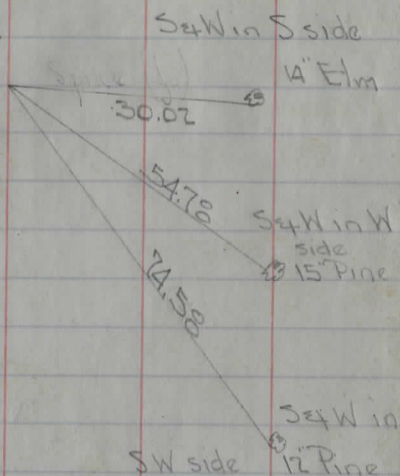
New Curve

| | |
|-----------------|-----------------|
| Δ: 9°-04 Rt | Δ: 9°-09 Rt |
| D: 6°-00' | D: 5° |
| P.I.: 254+01.4 | P.I.: 254+01.40 |
| T: 75.7 | T: 91.73 |
| PC: 253+25.7 | PC: 253+09.67 |
| L: 83.00 | L: 83.00 |
| P.T.: 254 92.67 | P.T.: 254 92.67 |
| E: 3.66 | E: 3.66 |

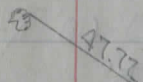
302 to

301+50⁴⁰

Spike (set 25
west of spk 34)



S4W in N Root
30" Maple



234+01²⁸



S4W in SE.
Root 22" Maple



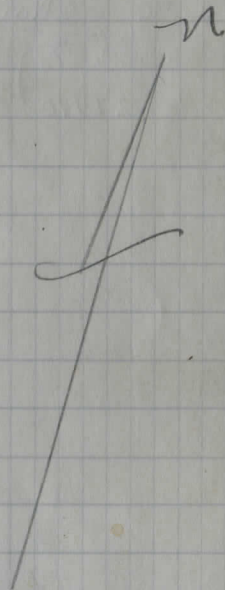
S4W in W side
24" Maple

Stk on Rt

Georgia Road
T.H. 124

P.O.T. *to be on the*

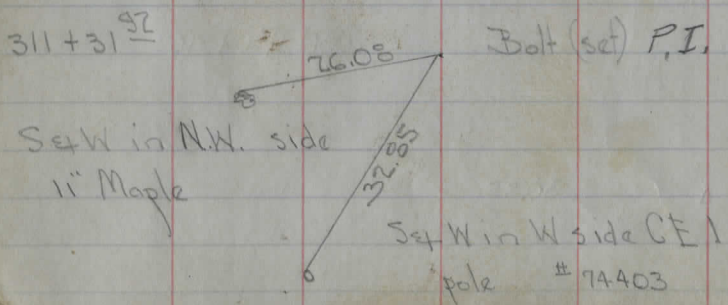
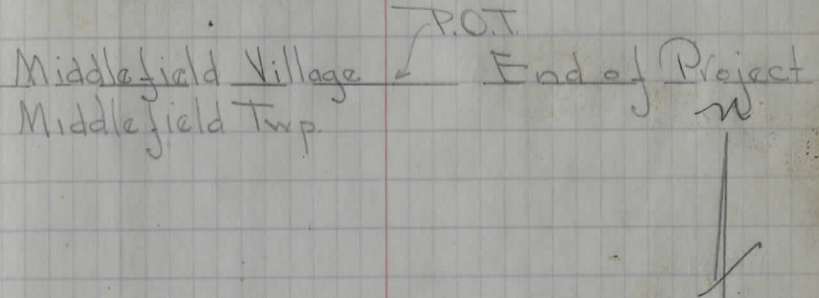
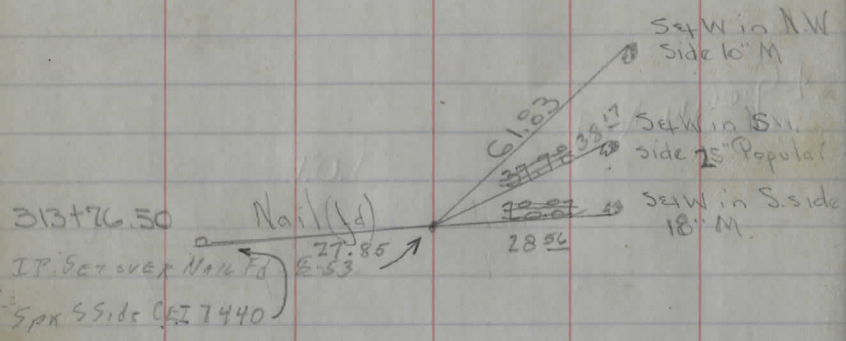
N 75-30 W



P.O.T.

282+00

30.55



| Old Curve | New Curve |
|--------------------------------------|--------------------------------------|
| $\Delta = 36^{\circ}-00' \text{ Rt}$ | $\Delta = 36^{\circ}-00' \text{ Rt}$ |
| $D = 15'$ | $D = 1^{\circ}-30'$ |
| $P.I. = 311 + 32.70$ | $P.I. = 311 + 31.92$ |
| $T = 124.40$ | $T = 248.72$ |
| $P.C. = 310 + 08.3$ | $P.C. = 308 + 83.70$ |
| $L = 240.00$ | $L = 480.00$ |
| $P.T. = 312 + 48.30$ | $P.T. = 313 63.70$ |
| $E = 19.80$ | $E = 39.31$ |


313+39
 313+0
 312+16.5
 312+0
 311+0
 310+68
 310+0

309+56
 309+54

309+16

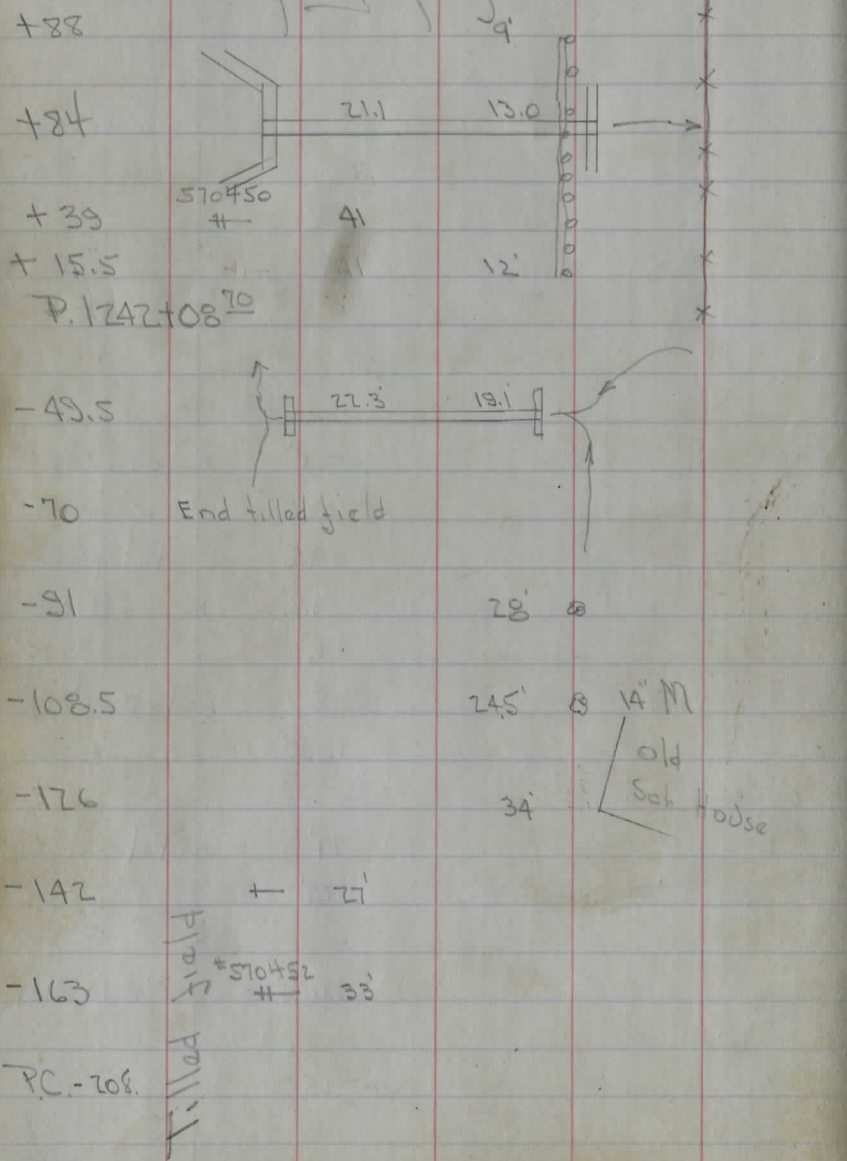
PC

20' o Tel. pole
 23.5' x
 7.5' o Tel. pole
 9.5' x
 6' x
 5' o Tel. pole
 16.5' x
 21' o Tel. pole
 22' x
 26.5' @ 24" Elm
 25' x



See next page for beginning of Topo

Topography



4' x 2' x 34.1 Stone Culit. ± 7' Conc ext. left. Cond - O.K. Channel needs cleaning for ± 50' Rt

12" C.I.P. Culit Conc. Hdwl Needs cleaning out

Note! Topo. for curve taken from tangents. 90°

J. B. FICHTNER

405 Orlando Ave., Akron 2, Ohio

Telephone: UNiversity 4604

~~7/6/50~~
~~242+84~~

M. Bourne

3' Dap x 4' wide = 1/2 sep
cone (42" = 9.6"
48" = 12.57")

Need
outlet
opened 1 ft
deeper
Elevs??

±100

242+08.7

±6

B.M. = 1148.29 = E. root 60" Elm

13"

#2?

Φ

Φ

Φ

X X X X X

B.M. = E. root 5' Elm
 $E = 1148.29$

$\Delta = 242 + 08.7$
culr = $\pm 242 + 79.8 = PT.$

+21

Pair
P.M.H.H.

osage
hedge

+33 + 28'
 248+11 #192687 32'
 +92 #192688 33'
 +84 + 39.5

246 21'

+82 9" Pear 33
~~+87~~ + 29

+66 #192689 31.5

+52 2.5' F.H. 8" 14" M 31.5

+31 8" 12" M 33

+13 +75'

+12 8" 10" M 33.5

245+0 Cinda 12" Cor.P.
 KWE 7" wedge pare.

244+82 8" cherry 36

Change to regular stationing.

P.T 20" Walnut 40.5

+ 34

+196 #192690 36

+160 Begin cut both sides

+150.5 5' Elm stump 40
 24.5

+133
 Begin
 Osage x
 Hedge x

| | | | | | |
|--------|-------------------------------|-------|-------|-------------------|--|
| +60 | | | | | |
| +58 | # 192680 | 33 | | | |
| +56 | | 25' | | | |
| +31 | | | 23.5 | | |
| 258+18 | + | 30' | | | |
| +69 | | | 23.5' | | |
| +59 | 9" M | 25.5' | | | |
| 257+01 | # 192681 | 33' | | | |
| +80 | + | 30' | | | |
| +76 | 24" Elm | 28' | | | |
| 256+22 | Prop Line End tilled field | | | | |
| +58 | # 192682 | 33' | | | |
| 255+41 | + | 29.5' | | | |
| +73 | | | 23.5 | 24" Hick | |
| +24 | | | 22' | 14" M (part dead) | |
| 254+09 | # 192683 | 34' | 21.5 | 18" M | |
| +95 | | | | Field Drive | |
| +86 | + | 25' | | | |
| | | 31.5' | | | |
| 253+80 | | | 22' | | |
| +60 | # 192684 | 31.5' | | | |
| 252+57 | + | 29' | | | |
| 251+22 | + | 29' | | | |
| 251+11 | # 192685 | 32' | | | |
| 250+0 | | | 24' | | |
| 249+80 | + | 28.5' | | | |
| 249+59 | # 192686 | 32' | | | |

Begin + Red Row
15' to 10' Maples

Tilled

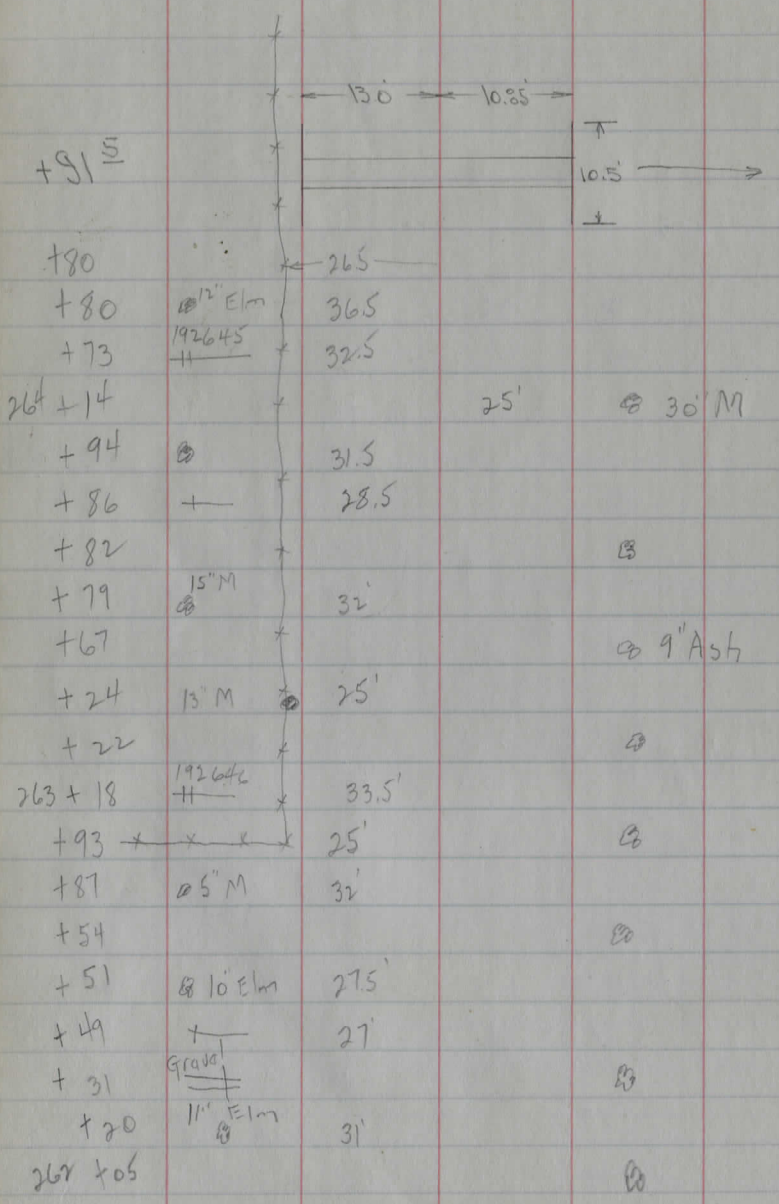
Field

Osage
hedge

| | | | |
|--------|------------------|-------|----------------------|
| +76 | House | 19' | |
| +77 | drain 8 W. Ch | 28' | |
| +75 | | | o |
| +62 | 192647 H | 33' | |
| +51 | 10' Elm | 30' | |
| +43 | | 25' | o |
| +15 | | | o |
| +09 | | 32' | o |
| 261+08 | + | 28.5' | |
| +24 | | | o |
| +77 | 14" M o | 33' | |
| +54 | 14" M o | 33' | |
| +58 | 14" M o | 35' | o |
| +41 | 12" M | 33' | |
| +31 | slag drive | | Bank x over o +24 |
| +14 | 24" M. stump | 33' | |
| +11 | | 12' | M.B. |
| +09 | 192679 H | 33.5' | |
| 260+07 | | | o 10" Apple |
| +93 | | | o |
| +63 | | 24' | o |
| +59 | + | 30' | |
| +57 | 7" M | 21' | |
| 259+32 | | | o |

Tilled

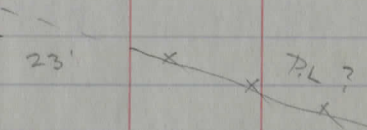
Field



3.5' x 3' x 23.25 Conc. Box Culvert (Part stone
sidewalls.) 2" Pipe failings. Cond. = Fair

P.L.A. 4. 10/11/11

| | | W | E | |
|---------|-----------------------|-------|-------|------------------|
| +01 | + | 33' | Part | |
| 268+0 | | | 133' | |
| +97 | | | 11.5' | □ Milk stand |
| +91 | 192643 H | 32.5' | | |
| +89 | 6" Ash a | 31' | 15.5' | 15" x 16" Cor.P. |
| +84 | + | | | Dirt |
| +69 | x | | | ↳ 12" Apple |
| +54 | 24" M a | 29' | 26' | ↳ 6" M |
| +43 | + | | 26' | ↳ 16" M |
| +41 | 22" M a | 29' | | |
| +26 | x | | 26' | ↳ 20" M |
| x +15.5 | x P.L. | | | |
| 267+05 | 22" M a | 29' | | |
| +97 | + | | 26' | ↳ 11" M |
| +91 | | | 26.5' | ↳ 24" Twin Ash |
| +84 | 13" M a | 30' | 20.5' | ↳ 14" Ash + 81 |
| +66 | 12" stub a | 28.5' | 24' | ↳ 20" M |
| +60 | + | 32' | | |
| +51 | a | 29.5' | | |
| +32 | 192644 H | 32' | | |
| +21 | + | | 24' | ↳ 13" M |
| 266+0 | + | | | End filled field |
| +93 | 13" Ash a | 26.5' | | |
| +42 | 15" x 11" M stub a | 28' | | |
| 265+20 | + | 31' | | |

| | W | E | |
|----------|-------------------------|-------|---------------------------------------------------------------------------------------|
| +94 | 192641 | 33' | |
| +90 | | | |
| +59 | 6' M @ | 29.5 | 23'  |
| +52 | | 25' | @ |
| +47 | 15' x 16' Corl. Dirt | 15' | |
| +42 | | 10' | M.B. |
| +20 | | 22' | @ 12" M |
| 270 + 04 | | 25.5 | @ 18" M |
| +95 | | 25.5 | @ 18" M |
| +91 | } 1 1/2 St Fr. H | | |
| +69 | | | 25.5 @ 14" Pine |
| +54 | | ± 90' | |
| +48 | 6' Ash @ | 30.5 | |
| +41 | | 25.5 | @ 20" M |
| +39 | 192642 | 33' | |
| +36 | | 31' | |
| +12 | | 25.5 | @ 19" M |
| 269 + 05 | | 30.5 | |
| +14 | | 28 | @ 21" Pine |
| +40 | | | |
| 268 + 13 | | ± 70' | 1 1/2 St Fr. H |

| | | +88 | 25' | @ 21" M |
|--------|-----------|----------|-------|-------------|
| | | +59 | 25' | @ 26" M |
| | | +16 | 27' | |
| | | | 27' | |
| | | | 14.3' | |
| | | 277 + 0 | 25 | @ 24" M |
| 192637 | | +95 | | |
| | 32' | +71 | 25' | @ 22" M |
| | | +55 | | |
| | | | | |
| | | 276 + 34 | 29' | @ 14" Apple |
| | 24" Slump | 18' | +81 | |
| | | 27 | +78 | |
| | | | +77 | 18' → |
| | | | | |
| | | | 22' | @ 22" M |
| 192635 | | 275 + 45 | | |
| | 33' | +70 | 23' | @ 15" M |
| | | +41 | | |
| | | 274 + 08 | 23' | @ 18" M |
| | | +94 | | |
| 192639 | | 273 + 04 | | |
| | 33 | | | |
| | | 272 + 45 | | |
| 192640 | | +90 | | |
| | 33' | | | |
| | | 271 + 45 | 22.5 | @ 14" M |
| | | | | |

Mandarin Pile

| | W | E | |
|--------|-----------|-------|--------------|
| +26 | | 28 | |
| +05 | | 24' | ⊗ 10' Locust |
| +03 | 569729 | 33' | |
| 283+03 | 7' Locust | 29' | |
| +83 | 30' stump | 29.5 | |
| +66 | | 24.5 | ⊗ 9" Ash |
| 282+11 | | 23' | + |
| +99 | | | ⊗ 28" Elm |
| +66 | | | ⊗ 18" M |
| +36 | | 23' | ⊗ 24" M |
| | | 28' | |
| +23 | | 33 | |
| +19 | | 27 | |
| 281+02 | | | |
| 280+52 | | 23' | ⊗ 22" M |
| +95 | | 23' | ⊗ 18" M |
| +93 | 192635 | 33' | |
| +80 | | 26.5' | |
| +75 | 20' stump | 19' | |
| 299+36 | | | ⊗ 20" M |
| +76 | | 25' | ⊗ 22" M |
| +50 | | 27' | |
| +46 | | 25' | ⊗ 24" M |
| 278+45 | 192636 | 33' | |

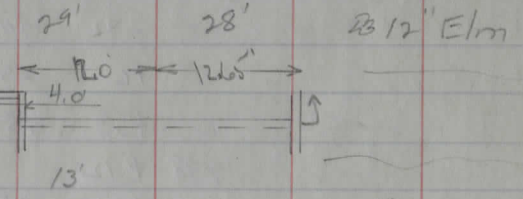
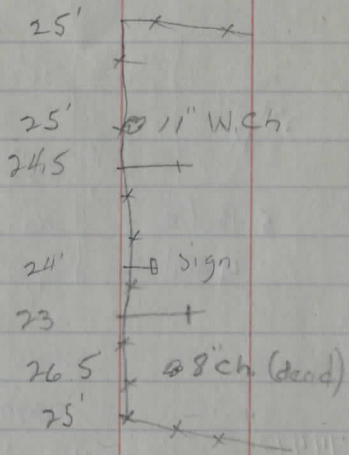
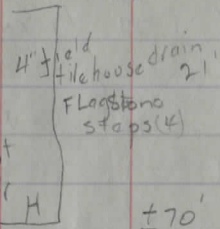
55

| | | | | | |
|--|--------------|--------|------|-----------------|------------|
| | | +40 | 27.5 | ⊗ 6" Ch. | |
| | | +29 | 34 | ⊗ 20" M | |
| | Small blush | 287+05 | 34 | ⊗ 18" M | 25' Fr. H. |
| | | +97 | 12.5 | M.B. | H. |
| | | +77 | | +50' | |
| | | 26.5 | | +63 | |
| | 74422 | 33' | | +59 | |
| | | +21 | 16' | | |
| | | 286+17 | 26' | | |
| | | +78 | 22.5 | ⊗ 4" Peach | |
| | | +75 | 16.5 | ⊗ chicken fence | |
| | | | | | |
| | 12' Tree | | 3' | +51 | |
| | | +27 | 28.5 | +21 | |
| | | +85 | 27 | | |
| | 74423 | | 33' | +82 | |
| | | +62 | 12' | M.B. | |
| | 22' M | | 36' | +54 | |
| | Wooden sign | | | | |
| | cindora slag | | | +36 | |
| | 22' M | | 37' | +19 | |
| | 25' Fr. H. | | | | |
| | | 284+02 | 25' | ⊗ 20" M | |
| | | +85' | | +88 | |
| | 6" Loc | | 30' | +84 | |
| | | +94 | 20' | | □ sign |
| | | +52 | 27' | | |
| | | | 22' | | |
| | | 283+76 | 24' | ⊗ 8' Loc. | |

| | W | E |
|---------|--------------------|------------------|
| +55 | 74416 | 29' |
| 294 +03 | | 21.5' |
| 293 +14 | 74417 | 29' |
| +77 | | 21.5' |
| +69 | Sign | 18.5' |
| 292 +54 | | |
| +75 | 74418 | 28.5' |
| +41 | | 21.5' |
| +27 | | 28' |
| 291 +12 | | 29' |
| +97 | | 29' |
| +49 | | |
| 290 +10 | | 22' |
| 289 +98 | 74419 | |
| +82 | | 22' |
| +72 | | 23' |
| +44 | | 27' |
| +25 | 74421 | 33' |
| 288 +14 | | 11.5' M.B. |
| +98 | | 23' |
| +87 | 8" x 15' Form tile | 12' x 33' V.S.P. |
| +67 | Cinder | Gravel |
| +51 | | 9" Ch. |
| 287 +19 | | 24.5' |

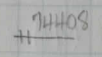
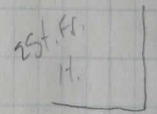
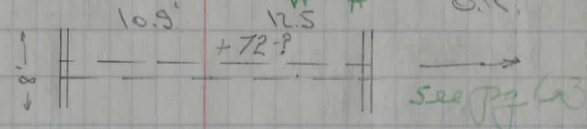
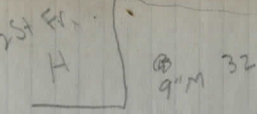
| | W | E |
|--------------|-------|-----------------|
| 18' out | | +26 |
| 3' Palm tile | | +31 |
| House drain | 74412 | +25 |
| 22'-28.5' | | 27 |
| 30' | | +11 |
| 300' | | +03 |
| 28' | | 10" Ch |
| | | +91 |
| 25' Fr H | | 30' +87 |
| 4" Pipe | | +80 |
| 13.5' M.B. | | |
| 5" Peat | | 40' +61 |
| Gravel | | 26' +55 |
| | | 15' +42 |
| | | +36 |
| | | 26' |
| | | 14" Elm |
| | | +22 |
| | | 26.5' |
| | | 8" Elm |
| 74413 | | 29.5' |
| | | 72 |
| | | +72 |
| | | 24.5' |
| | | 15" Elm |
| | | +61 |
| | | 25' |
| | | 10" Elm |
| | | +53 |
| | | 25.5' |
| | | 12" Elm |
| 298 | | +12 |
| | | +07 |
| | | 25' |
| | | 12" Elm |
| | | +04 |
| | | 25' |
| | | 12" Elm |
| | | +98 |
| | | 27' |
| | | 11" Elm |
| | | x P.L. |
| | | +88 |
| | | 21' |
| 74414 | | 29.5' |
| | | 297 +33 |
| | | +58 |
| | | 21.5' |
| Sign | | 18' |
| | | 296 +34 |
| 74415 | | 29' |
| | | +94 |
| | | 11" Plank cover |
| | | +86 |
| | | 145' |
| | | Wooden Gate |
| | | 295 +29 |
| | | 21.5' |

| | W | E |
|--------|----------------------------|-------|
| +60 | | |
| +52 | 4" old file house drain 2' | |
| +45 | Flagstone steps (4) | |
| +38 | 2' H | 25' |
| +19 | H | ±70' |
| 303+11 | | 25' |
| +97 | | 24.5' |
| +84 | 74409 | 28.5' |
| 302+65 | | 24' |
| +71 | | 23' |
| +60 | | 26.5' |
| +58 | | 25' |
| +40 | 74410 | 29' |
| +35 | | 28' |
| +22 | B sign | 13' |
| 301+0 | | 27' |
| +81 | | 27' |
| +79 | | 12' |
| +70 | | 27' |
| +66 | | 13' |
| +60 | | 27' |
| +44 | | 18' |
| 300+30 | | |



2' Plank wood pipe source
2 St Fr
H

| 25' Fr. H | | +65 |
|-----------------------------------------------|--|--------------------------------|
| 9" M 32 | | +61 |
| | | +39 |
| | | +36 27' |
| | | +29 |
| 15" M 32 | | 306 +12 27' |
| | | 30" Elm |
| | | (Part stone W. end) |
| | | 2.5' x 2' x 23.4' Conc. Box C. |
| | | W. H. O.K. |
| | | 10.5' |
| | | +72.5' |
| | | see page 60 |
| 74407 | | 27.5' |
| | | +63 |
| | | +58 28' |
| 10" St 30 | | +40 |
| 12" Stamp 30 | | +23 |
| 12" Ch. 35' | | 305 +01 |
| | | 197 13' M.B. |
| 18" x 24.65 Enc. Corr. P.C. 10' Excell. cond. | | |
| 10' x 22" VSP | | 15' |
| Dist | | +96 |
| | | +86 24' |
| | | 30" Elm |
| | | +83 |
| 25' Fr. H | | 40' |
| | | +62 |
| | | +31 26.5' |
| | | +25 |
| 74408 | | 28' |
| 5" Ch. | | 33.5' |
| 6" Ch. | | 33' |
| | | 304 +04 |
| | | 303 +87 |



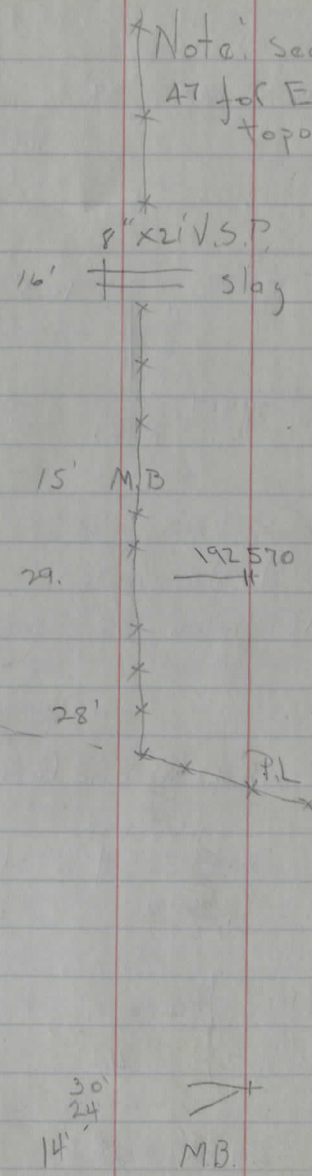
+97 10" M 36'
 +71 10" M 31'
 +61 74404 # 27.5'
 4" x 15" V.S.P.
 309+25 NOT used 15'

+53 174405 27'
 6" x 25" drain tile
 +46 slag 15'
 +41

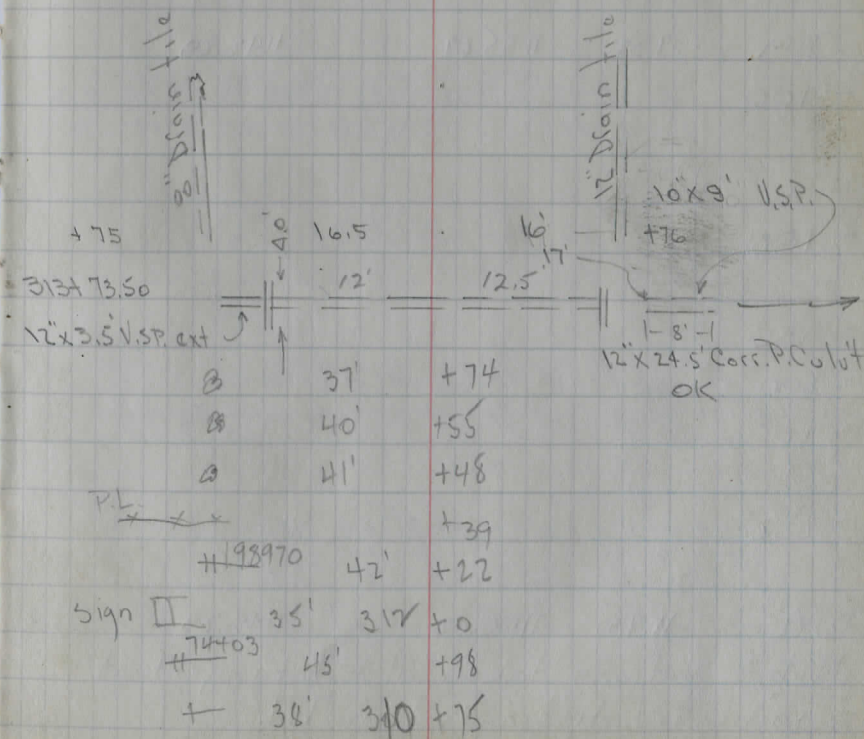
+22
 308+17 25" Fr.
 +99 H ±70'
 +73
 +66 15" M 32'
 +40 5" Pine 34.5'
 25'

+03
 +09 sign 17'
 307+05 174406 27'
 +91
 +73

8" x 18" V.S.P.
 306+77 cinder 14'



*Note: see page 47 for E side topo



+75 16.5'
 313+73.50
 12" x 3.5" V.S.P. ext
 12" Drain Tile
 10" x 9" V.S.P.
 12" x 24.5" Corr. P.C. Cul. + OK
 37' +74
 40' +55
 41' +48
 +39
 #92970 42' +22
 sign 35' 312 +0
 #74403 45' +98
 + 38' 310 +75

2/1/39 Cloudy. 75°
Pomeroy-Richards-Clawse

X sections for Curve P.I. 292+00⁷⁰

P.I. Split the angle

-49.5 12 x 41.4 C.I.P. Culit

-50

BM 7.38 1155.67 1148.29

-100

-150

-200

-250

B.M. 11.73 1160.02 1148.29

Note: Sections taken at 90° to tangents at indicated distances from P.I.

13.1 11.2 10.7 8.0 7.7 6.43 5.91 6.
100 75 50 44 36 21 2

10.65 6.60 5.4 6.04 8.88
F.L. Hdwl E Hdwl F.L.

11.2 10.8 10.4 9.0 9.1 10.2 6.6 5.4 5.1 5.6 8.0 7.2 5.2
75 50 41 34 30 22 16 E 11 17 22 25 29

12.6 11.2 9.7 8.1 10.4 8.2 7.6 7.40 7.65 8.2 9.0 3.6
75 50 31 26 22 15 9 E 7 13 16 30

5.7 5.4 4.5 6.7 5.9 4.8 4.64 4.95 5.7 5.5 1.6
50 30 24 20 15 7 E 7 12 15 23

3.5 3.0 2.6 4.5 3.8 2.82 2.65 2.8 3.5 2.9 0.8
40 25 21 16 14 7 E 7 14 19 24

1.7 1.2 1.3 0.2 3.2 2.7 1.85 1.7 1.97 2.4 2.5 1.6 +0.7
40 29.5 24 22 15 14 7.5 E 7 14 16 19 23.5

Spk E Root 5' Elm stump +150 on tangent 40' Lt

+200

BM 11.92 1160.21 1482.9

+700

+150

+100

+84 Aixi x 341 Stone Collet

+50

1155.67

1.3 1.5
50 28

4.0 2.4 (1.95) 1.73 (2.0)
17 14 5 6

8.6 8.4 5.9 6.9 5.1 (4.15) 3.86 (4.05)
75 50 24 21 17 9 6

11.2 10.1 9.5 10.5 6.1 (5.85) 5.55 (5.55)
75 50 29 25 17 10 6

11.6
200

12.4 11.9 11.7 11.8 12.45 10.35 7.4 (6.3) (5.8) 6.94 12.00 12.4 12.4
150 75 50 30 FL Top Hdwl 9 7 Hdwl FL 30 75
opening

11.2 11.1 11.3 7.8 (7.13) 6.1 (6.05)
75 50 33 24 16 6

10/1/39
 Pome. 104 E.C.
 Cloudy - 30°

X Sections of Cuba

P.I. = 311 + 3192

+ H.I. - E.

312 to

312 + 50

313 to

313 + 50

12" x 24.5 Conc. P.C. lot

| | | | | |
|------|-------|---------|------|-----------|
| T.P. | 998 | 1194.69 | 4.79 | 1184.71 |
| T.P. | 594 | 1189.00 | 3.75 | 1183.00 |
| T.P. | 504 | 1186.31 | 0.97 | 1181.27 |
| T.P. | 771 | 1182.24 | 1.70 | 1174.53 ✓ |
| T.P. | 10.74 | 1175.73 | 1.39 | 1164.99 ✓ |
| B.M. | 10.68 | 1166.38 | | 1155.70 |

86.22 85.69 84.82 85.1 84.9 84.0 83.2

847 9.0 9.87 9.6 9.8 10.7 11.5 ✓
 27 6 6 12 25 40

85.49 85.43 84.6 83.5 84.5 84.1 83.8

9.2 9.26 10.1 11.2 10.2 10.6 11.9
 17 5 8 13 20 40

85.09 85.31 84.99 84.3 82.7 83.7 84.0 82.9

9.6 9.38 9.7 10.4 12.0 11.0 10.7 11.8 ✓
 9 6 11 15 18 26 40

84.75 85.05 84.80 84.0 82.6 83.8 84.1 83.4 82.6

9.94 9.64 9.85 10.7 12.1 10.9 10.6 11.3 12.1
 8 4 8 13 16 18 24 30 40

80.4 79.1
 14.3 15.6
 50 100

82.44 84.9 85.24 84.49 81.89 81.89 84.2 81.1
 12.25 9.80 9.45 10.2 12.8 12.8 10.5 13.6
 F.L. Hawl E Hawl F.L. F.L. 21 F.L.

82.69
 12.0

82.39
 12.3

F.L. 8" Dr. tile

F.L. 12" Dr. tile

NW ≠ top step McClurg house (1st house
 N. of Grod St ← E side of State St.

| | + | H.I. | - | E |
|------------|------|---------|------|---------|
| T.P. | 0.85 | 1182.11 | 4.96 | 1181.26 |
| T.P. | 3.15 | 1186.27 | 5.93 | 1183.07 |
| T.P. | 4.29 | 1189.00 | 9.92 | 1184.91 |
| B.M. (Set) | | | 5.55 | 1189.14 |

308+8370 PC.

309+0.

309+50

310+0

310+50

311+0

311+50

1194.69

Spike in W. Root 28" Elm 309+16 26.5 Rt

87.8 85.3 86.1 86.5 86.54 86.7 86.1 85.4 88.1 87.2 87.3

6.9 9.4 8.6 8.20 7.85 8.0 8.6 9.3 6.6 7.5 7.4

21 15 12 6 8 15 18 23 30 40

86.89 87.16 86.99 86.3 85.7 88.2 87.4 87.4

| | | | | | | | |
|------|------|------|-----|-----|-----|-----|-----|
| 7.80 | 7.53 | 7.70 | 8.4 | 9.0 | 6.5 | 7.3 | 7.3 |
| 7 | 8 | 8 | 14 | 17 | 23 | 30 | 40 |

88.02 88.11 87.89 87.2 86.5 88.6 88.5 87.2

| | | | | | | | |
|------|------|------|-----|-----|-----|-----|-----|
| 6.65 | 6.58 | 6.80 | 7.5 | 8.2 | 6.1 | 6.2 | 7.5 |
| 10 | 6 | 6 | 12 | 14 | 18 | 25 | 40 |

88.23 88.19 87.5 88.7 88.4 88.1 86.9

| | | | | | | |
|------|------|-----|-----|-----|-----|-----|
| 6.46 | 6.50 | 7.2 | 8.0 | 6.3 | 6.6 | 7.8 |
| 15 | 8 | 6 | 8 | 12 | 21 | 40 |

87.82 87.33 86.6 87.7 87.9 86.7 85.9

| | | | | | | |
|------|------|------|-----|-----|-----|-----|
| 6.87 | 7.36 | 8.10 | 7.0 | 6.8 | 8.0 | 6.8 |
| 22 | 6 | 4 | 11 | 30 | 40 | |

87.24 86.83 86.0 86.94 86.9 85.7 85.0

| | | | | | | |
|------|------|-----|------|-----|-----|-----|
| 7.45 | 7.86 | 8.1 | 7.75 | 7.8 | 9.0 | 9.1 |
| 26 | 10 | 3 | 7 | 21 | 40 | |

86.71 86.09 85.1 86.1 85.9 85.1 84.2 84.0

| | | | | | | |
|------|------|------|-----|-----|------|------|
| 7.90 | 8.60 | 8.58 | 8.8 | 9.6 | 10.2 | 10.1 |
| 25 | 9 | 3 | 8 | 15 | 30 | 40 |

1/24/68

Profile
 Temple Swine Creek Rd from old state
 Patterson to Madison Rd.
 cloudy, cool ± 33

| | + | HJ | - | elev | |
|---------|------|-------------------|------|------------------|------------|
| BM | 0.15 | 1153.72 100.15 | | 1153.57 100.0 | assumed |
| sta 0+0 | | | 3.7 | 1150.0 96.45 | |
| 1+0 | | | 5.6 | 1148.1 94.55 | |
| 2+0 | | | 5.0 | 1148.7 95.15 | |
| 3+0 | | | 3.5 | 1150.2 96.65 | |
| 4+0 | | | 3.9 | 1150.3 96.75 | high point |
| 5+0 | | | 6.0 | 1149.7 94.15 | |
| 6+0 | | | 8.7 | 1145.0 91.45 | |
| TP | 0.44 | 1145.44 91.87 | 8.72 | 1145.00 91.43 | |
| 7+0 | | | 3.9 | 1141.5 87.97 | |
| 8+0 | | | 6.4 | 1139.0 85.47 | |
| 9+0 | | | 8.8 | 1136.6 83.07 | |

Spk SE side 18" maple

$\pm 68'$ S int of Madison, Old State & Swine Creek Rd & 28' W of $\frac{1}{2}$ of old state.

| | | | | | | | | | |
|---|-------|-------|-------|-------|-----|-------|-------|---------|----|
| N | 87.17 | 86.97 | 84.27 | 84.97 | Sec | 65.17 | 84.57 | 4.97.27 | S |
| | 4.7 | 4.9 | 2.6 | 6.9 | | 6.7 | 2.3 | 4.6 | NE |
| | 30 | 17 | 13 | 10 | | 11 | 14 | 19 | |

| | + | HI | - | clever | |
|-------|------|------------------|-------|------------------|-----|
| 10+0 | | 1125.00 91.87 | 10.4 | 1135.0 81.47 | |
| TP | 2.22 | 1136.81 83.24 | 10.85 | 1134.59 81.02 | |
| 11+0 | | | 2.9 | 1133.9 80.30 | |
| 12+0 | | | 3.7 | 1133.1 79.50 | |
| 13+0 | | | 4.3 | 1132.5 78.94 | |
| 14+0 | | | 4.9 | 1132.4 78.50 | |
| 15+0 | | | 5.1 | 1131.7 78.14 | |
| 16+0 | | | 6.2 | 1130.6 77.04 | |
| 17+0 | | | 8.1 | 1128.7 75.10 | |
| 18+0 | | | 9.9 | 1126.9 73.34 | |
| 18+80 | | | 10.2 | 1126.6 73.04 | int |

| | N | Typical | Sec | S | | |
|-----|------------------|------------------|------------------|------------------|------------------|------------------|
| out | $\frac{5.9}{78}$ | $\frac{6.6}{14}$ | $\frac{5.6}{71}$ | $\frac{5.8}{11}$ | $\frac{6.4}{14}$ | $\frac{4.6}{18}$ |
| | | | | | | $\frac{4.0}{30}$ |

1-25-58
H. Patterson
P. Young

| | + | HI | - | Elev | |
|------|--------------------------------|-----------------------------------|-------|----------------------------------|-----------------|
| B.M. | 8. ⁵³ ₃₈ | 1125. ⁹⁶ ₈₁ | | 1117.43 | J15 |
| T.P. | 5.63 | 1131.34 | 0.25 | 1125.71 | |
| T.P. | 10.37 | 1141.28 | 0.43 | 1130.91 | |
| T.P. | 6.67 | 1147.18 | 0.77 | 1140.56 | |
| T.P. | 0.57 | 1140.25 | 7.50 | 1139.68 | |
| T.P. | 0.57 | 1129.91 | 10.91 | 1129.34 | |
| T.P. | 0.35 | 1120.28 | 9.98 | 1119.93 | |
| T.P. | 11.34 | 1130.63 | 0.99 | 1119.29 | |
| T.P. | 4.24 | 1133.37 | 1.50 | 1129.13 | |
| T.P. | 0.29 | 1123.43 | 10.23 | 1123.14 | |
| B.M. | 7.40 | 1125.23 | 5.60 | 1117.83 | * cut in NW 7 W |
| T.P. | 9.05 | 1133.97 | 0.31 | 1124.92 | ← use |
| T.P. | 0.93 | 1129.77 | 5.13 | 1128.89 | |
| T.P. | 9.21 | 1138.92 | 0.06 | 1129.71 | |
| T.P. | 2.87 | 1141.82 | 0.47 | 1138.45 | |
| T.P. | 0.46 | 1132.33 | 9.45 | 1131.87 | |
| T.P. | 1.81 | 1125. ⁷ ₀₇ | 7.07 | 1125.26 | |
| B.M. | | | 9.64 | 1117. ⁴ ₃₃ | |
| B.M. | 11.55 | 1129.38 | | 1117.83 | |
| T.P. | 5.98 | 1134.17 | 1.19 | 1128.19 | Vert spk |
| B.M. | 2.17 | 1131.96 | 4.38 | 1129.79 | ← |
| | | | 5.35 | 1126.61 | |

USCG Moth 1117.425 63' NE X of farm
crossing E. Trk. of B & O, &
30' E. of E Rail

about culvt ± 475.0' N of + Swine creek + Madison Rds. 20' Lt of &
on Madison Rd

W Root 30" Maple Sta 18+50 30' Lt & Swine creek Rd

Elev + Swine creek + Madison Rd. North

| | + | HI | - | Elev |
|----|-------|---------|-------|-------------|
| BM | 3.85 | 1133.64 | | 1129.79 |
| TP | 6.10 | 1138.34 | 1.40 | 1132.24 |
| TP | 11.41 | 1148.23 | 1.52 | 1136.82 |
| TP | 5.93 | 1154.07 | 0.09 | 1148.14 |
| BM | | | 0.50 | 1153.57 Use |
| TP | 0.06 | 1147.43 | 6.70 | 1147.37 |
| TP | 1.40 | 1137.98 | 10.85 | 1136.58 |
| TP | 2.41 | 1134.66 | 5.73 | 1132.25 |
| BM | | | 4.80 | 1129.86 |

spr W root 30" Maple Sta 18+50 ±30 L of Swine Creek Rd

spr SE side 18" Maple ±68' S int of Madison, old State & Swine Creek Rd ±28' W of old State Rd

ELEVATIONS & topo of
SWINE CREEK @ BFO trestle
(TRANSIT - STADIA method)

| STA | RI | DIST | HORIZ X | VERT X | ELEV. |
|-----|------|-----------|---------|---------|--------|
| | | HI = 4.72 | TC | | 102.48 |
| BM | .48 | 47.87 | 0°00' | -2°58' | 100.00 |
| 1 | .74 | 73.98 | 324°50' | +0°50' | 103.55 |
| 2 | .80 | 79.96 | 326°25' | +1°20' | 104.34 |
| 3 | .60 | 59.92 | 0°55' | +2°05' | 104.64 |
| 4 | .65 | 64.99 | 45°07' | +0°35' | 103.14 |
| 5 | 1.04 | 103.97 | 77°50' | -1°02' | 100.61 |
| 6 | .68 | 67.34 | 320°27' | -5°39' | 95.82 |
| 7 | .68 | 65.90 | 318°00' | -10°07' | 90.72 |
| 8 | .62 | 58.86 | 315°25' | -13°00' | 88.89 |
| 9 | .58 | 55.39 | 300°18' | -12°15' | 90.45 |
| 10 | .54 | 51.45 | 294°27' | -10°33' | 91.03 |
| 11 | .45 | 44.86 | 280°25' | -3°12' | 99.97 |
| 12 | .16 | 15.00 | 313°44' | -14°28' | 98.61 |
| 13 | .28 | 20.88 | 336°28' | -30°06' | 90.33 |
| 14 | .32 | 27.56 | 347°12' | -24°20' | 90.47 |
| 15 | .37 | 30.85 | 348°54' | -24°04' | 88.70 |
| 16 | .46 | 40.94 | 352°53' | -19°22' | 88.09 |
| 17 | .50 | 46.65 | 361°50' | -15°00' | 89.98 |
| 18 | .52 | 51.52 | 357°42' | -5°29' | 97.53 |
| 19 | .59 | 58.97 | 358°26' | +1°20' | 103.85 |

(cont on pg. 71)

1 GLK
X GAM
WY GAM

MIDDLEFIELD TWP
GEARUA Co., OHIO

PARTLY CLOUDY 69
COOL - 65°F
9 SEP 81

REMARKS

INV. 15" CULVERT (GRD. SHOT)

5' off edge rd. top of bank

3' off rd. edge top of bank

5' " " " " " "

15' " " " " " "

GRD for CROSS-SECTION #1

" " " EDGE CRK

BOTTOM CRK

CHANGE GRD.

" "

START CROSS-SECTION #2

CHG GRD

" "

" "

" "

water level +.6' 88.69

EDGE GOOD RETAINING WALL

CHNG GRD

" "

H. Patterson
 J. Donoghue
 9-23-61
 Clear - warm

Burdysburg Cemetery
 Lot 3 Sec. 5 Parkman Twp

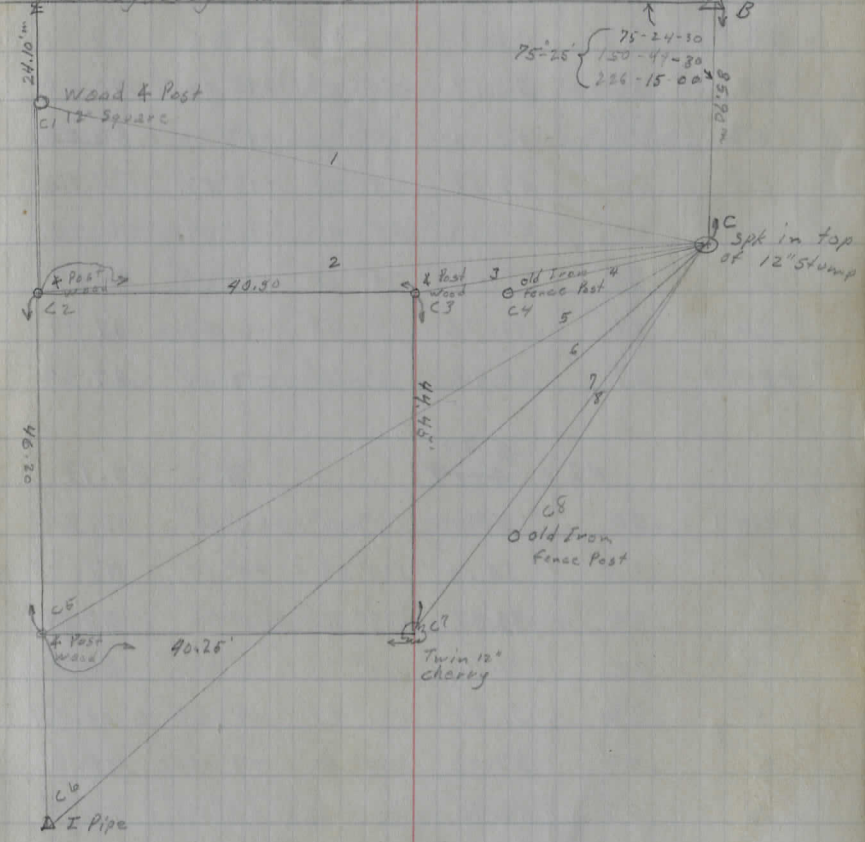
Sta 136 + 199 1/2" I Pipe Ed

| Sta | Sta. | A | B | Mean | Dist. |
|-----|------|--------------|--------------|-----------|---------|
| C | B | A 1 | A 2 | Mean 4 | Dist. |
| 1 | | 77°-46'-00" | 153°-32'-00" | 77°-46' | 130.10' |
| 2 | | 138°-34'-00" | 277°-08'-00" | 138-34 | 140.68' |
| 3 | | 146°-55'-30" | 273°-51'-00" | 146-55-30 | 67.90' |
| 4 | | 149°-36'-30" | 299°-13'-00" | 149-36-30 | 27.60' |
| 5 | | 172°-45'-00" | 345°-30'-00" | 172-45-00 | 23.45' |
| 6 | | 189°-05'-00" | 18°-10'-00" | 189-05 | 81.99' |
| 7 | | 199°-24'-00" | 38°-48'-00" | 199-24 | 107.49' |
| 8 | | 196°-20'-00" | 32°-40'-00" | 196-20 | 54.93' |
| | | | | | 45.68' |

All angles turned Counter
 Clockwise

field book 38 Pg 28429
 Burdysburg Rd 600.45'

Sta 143 + 00 1 1/2" I Pipe Ed



topo & elevations
 SWINE CREEK (RETAINING WALL)
 (transit stadia method)

1 - GLK
 K - GAM
 5:30 - 6 AM

MIDDLEFIELD TWP
 GEORGETOWN CO, OHIO

PARTLY CLOUDY
 COOL 65°F
 9 SEP 81

K @ 102.48

| STA | RI | DIST | HORIZ X | VERT X | ELEV. |
|-------|-----|-------|---------|----------|-------|
| 20 | .53 | 52.86 | 52° 28' | -3° 00' | 99.71 |
| 21 | .89 | 88.90 | 79° 51' | -1° 52' | 99.58 |
| 22 | .56 | 53.17 | 54° 25' | -13° 00' | 90.24 |
| 22 | .56 | 51.01 | 54° 51' | -17° 22' | 86.52 |
| 23 | .55 | 49.19 | 54° 54' | -18° 57' | 85.58 |
| 24 | .50 | 44.08 | 54° 01' | -20° 08' | 86.32 |
| 25 | .38 | 32.05 | 74° 13' | -23° 18' | 88.67 |
| 26 | .22 | 21.72 | 99° 54' | -6° 32' | 99.99 |
| TBM 1 | .47 | 44.97 | 13° 26' | -17° 00' | 89.34 |

REMARKS
 X-SECTION 3 top retaining wall
 " 4 " " " (END)
 X-SECTION 3 High water ~~at~~ level on wall
 BOTTOM CRK (top base ^{89.12} + 2.6) (water level ^{87.92} + 1.4) 12" dia
 " "
 EDGE CREEK (GRD + 4')
 CHG GRD
 TOP BANK
 ON CORNER RET WALL footer

HI = ^{5.20}~~4.97~~

K @ 89.13

| | | | | | |
|-------|-----|-------|----------|---------|-------|
| TBM 1 | .50 | 50.00 | 0° 00' | +0° 14' | 89.34 |
| 1 | .34 | 34.00 | 134° 03' | +0° 10' | 89.23 |
| 2 | .34 | 33.97 | 135° 02' | -2° 45' | 87.50 |
| 3 | .32 | 31.76 | 172° 28' | -5° 00' | 86.35 |
| 4 | .32 | 31.80 | 181° 55' | -4° 34' | 86.59 |
| 5 | .40 | 39.02 | 202° 52' | +9° 00' | 95.31 |
| 6 | .57 | 56.92 | 358° 45' | +2° 09' | 90.35 |

(HIGH WATER MARK X-SECT #4
 →
 BOTTOM; END WALL top of base
 BOTTOM CRK
 EDGE CRK
 TOP BANK
 HIGH WATER MARK X-SECTION 2

Remove 1 maple 1 Pick at 2nd Cr.
Rt 262+50 to 264+25 10" F. Sill

Lt 263+25 Remove 7 1/2" maple
264+90 Culvert ok. as is

266+60 Remove ash Rt.

266+50 to 268+30 Pavement gutter left

266+40 to 267+75 Rt 15" file VSP? or Pavement gutter
from Dr. Way to So.

DIRECTIONS FOR USE OF TABLES

TABLE No. 1

Distance of slope from side of shoulder
taken for any width roadway, slope 1 1/2 to 1.
If ground is nearly level, the cut or fill at side
slope is located by the double entry method in
the column and top row. The number in body
of table in same row and column gives distance

IMPROVED TABLES

AND

INFORMATION

TABLE No. 2

To find T, front and external for curve of
any other degree divide by degree of curve and
add correction found in column of correction.
Degree of curve with a given T may be found
by dividing T by the correction factor.
The distance from a point on the tangent to
the curve is very nearly the square of the tangent
length divided by twice the radius.

(ALLET)

| STA | MID HAIR | STAD FMT. | π | Hoe \angle | VEST \angle |
|-------------------|---------------|---------------|-------|-----------------|------------------|
| 2S ABUT Bm BAG | 1.00 10-32 | 1.41 10-73 | 5.45 | 77° 23' | -7' 00" |
| TA | | | | | 0-00 |
| BS B | | | | | |